



TEST REPORT

Report No.: 2401V87266E

Date: September 03, 2024

Page 1 of 51

Shenzhen Huafurui Technology Co., Ltd

Unit 601-03, 6/F, Block A, Building 1, Ganfeng Technology Building, No. 993 Jiaxian Road, Xiangjiaotang Community, Bantian Street, Longgang District, Shenzhen, P.R. China

Report on the submitted samples said to be:

Sample Description:	Smartphone
Style/Item No.:	KINGKONG ACE 2
Country of Origin:	China
Brand:	CUBOT
Sample Receiving Date:	July 23,2024
Lately Re-submit Date:	August 26,2024
Testing Period:	July 23,2024 - August 29,2024
Result:	Please refer to next page(s).

Signed for and on behalf of

BACL

Checked by: _____
Queenie Lee

Approved by: _____
Len Xie

Bay Area Compliance Laboratories Corp. (Shenzhen)

5/F. (B-West), 6&7/F., The 3rd Phase of Wanli Industrial Building D, Shihua Road, Fubao Community, Fubao Subdistrict, Futian District, Shenzhen, Guangdong, China

Tel: +86-755-33320018 Fax: +86-755-33320008

QB-CH-R001 (V1.0)



TEST REPORT

Report No.: 2401V87266E

Date: September 03, 2024

Page 2 of 51

Summary of Test Result:

TEST REQUEST

CONCLUSION

A RoHS Directive 2011/65/EU and amendment directives (EU) 2015/863 on Lead,Cadmium, Mercury, Hexavalent Chromium, PBBs & PBDEs, Phthalates(DBP, BBP,DEHP, DIBP) content

A.1 XRF screening test

Pass

A.2 Wet Chemical Testing

A.2.1 PBBs & PBDEs content

Pass

A.3 Phthalates(DBP, BBP, DEHP, DIBP)content

Pass

TEST REPORT

Report No.: 2401V87266E

Date: September 03, 2024

Page 3 of 51

A RoHS Directive 2011/65/EU and amendment directives (EU) 2015/863 on Lead, Cadmium, Mercury, Hexavalent Chromium, PBBs & PBDEs, Phthalates (DBP, BBP, DEHP, DIBP) content

A.1 XRF screening test

Test method: IEC 62321-3-1:2013

Seq No.	Tested Part(s)	Result				
		Pb	Cd	Hg	Cr	Br
(1)	Black/yellow printed white paper with adhesive(label, USB cable)	BL	BL	BL	BL	BL
(2)	White PVC(cover, big plug, USB cable)	BL	BL	BL	BL	BL
(3)	Silvery metal(cover, big plug, USB cable)	BL	BL	BL	BL	---
(4)	Translucent plastic(cover, big plug, USB cable)	BL	BL	BL	BL	BL
(5)	White plastic(pin holder, big plug, USB cable)	BL	BL	BL	BL	BL
(6)	Silvery metal(pin, big plug, USB cable)	BL	BL	BL	BL	---
(7)	Silvery solder(pin, big plug, USB cable)	BL	BL	BL	BL	---
(8)	White PVC(cover, small plug, USB cable)	BL	BL	BL	BL	BL
(9)	Silvery metal(cover, small plug, USB cable)	BL	BL	BL	BL	---
(10)	Translucent plastic(cover, small plug, USB cable)	BL	BL	BL	BL	BL
(11)	White plastic(pin holder, small plug, USB cable)	BL	BL	BL	BL	BL
(12)	Black plastic(pin holder, small plug, USB cable)	BL	BL	BL	BL	BL
(13)	Silver metal(pin, small plug, USB cable)	BL	BL	BL	BL	---
(14)	Silvery metal(hook, small plug, USB cable)	BL	BL	BL	BL	---
(15)	Black body(SMD resistor, PCB, small plug, USB cable)	BL	BL	BL	BL	BL
(16)	Brown body(SMD capacitor, PCB, small plug, USB cable)	BL	BL	BL	BL	BL
(17)	White printed blue coated beige plastic with coppery metal(PCB, small plug, USB cable)	BL	BL	BL	BL	BL
(18)	Silvery solder(PCB, small plug, USB cable)	BL	BL	BL	BL	---
(19)	White PVC(wire jacket, USB cable)	BL	BL	BL	BL	BL
(20)	Green plastic(inner wire jacket, USB cable)	BL	BL	BL	BL	BL
(21)	White plastic(inner wire jacket, USB cable)	BL	BL	BL	BL	BL
(22)	Black plastic(inner wire jacket, USB cable)	BL	BL	BL	BL	BL
(23)	Red plastic(inner wire jacket, USB cable)	BL	BL	BL	BL	BL
(24)	Coppery metal(inner wire, USB cable)	BL	BL	BL	BL	---
(25)	White plastic(cover, plug, earphone)	BL	BL	BL	BL	BL
(26)	Silvery metal(cover, plug, earphone)	BL	BL	BL	BL	---

TEST REPORT

Report No.: 2401V87266E

Date: September 03, 2024

Page 4 of 51

Seq No.	Tested Part(s)	Result				
		Pb	Cd	Hg	Cr	Br
(27)	Black plastic(cover, plug, earphone)	BL	BL	BL	BL	BL
(28)	Black plastic(pin holder, plug, earphone)	BL	BL	BL	BL	BL
(29)	Silvery metal(pin, plug, earphone)	BL	BL	BL	BL	---
(30)	Silvery metal(hook, plug, earphone)	BL	BL	BL	BL	---
(31)	White soft plastic(PCB cover, plug, earphone)	BL	BL	BL	BL	BL
(32)*	White printed blue coated beige plastic with coppery metal(PCB, plug, earphone)	BL	BL	BL	BL	X
(33)	Silvery solder(PCB, plug, earphone, raw material)	BL	BL	BL	BL	---
(34)	Black printed white plastic(cover, controller, earphone)	BL	BL	BL	BL	BL
(35)	Golden metal(cover, MIC, PCB, controller, earphone)	BL	BL	BL	BL	---
(36)	Silvery metal(slice, MIC, PCB, controller, earphone)	BL	BL	BL	BL	---
(37)	White plastic(loop, MIC, PCB, controller, earphone)	BL	BL	BL	BL	BL
(38)	Red plastic(loop, MIC, PCB, controller, earphone)	BL	BL	BL	BL	BL
(39)	Silvery metal(loop, MIC, PCB, controller, earphone)	BL	BL	BL	BL	---
(40)	Silvery plastic(film, MIC, PCB, controller, earphone)	BL	BL	BL	BL	BL
(41)	Silvery metal(film holder, MIC, PCB, controller, earphone)	BL	BL	BL	BL	---
(42)	Black dry glue(PCB, MIC, PCB, controller, earphone)	BL	BL	BL	BL	BL
(43)	Black body(SMD triode, PCB, MIC, PCB, controller, earphone)	BL	BL	BL	BL	BL
(44)*	Green coated beige plastic with coppery metal(PCB, MIC, PCB, controller, earphone)	BL	BL	BL	BL	X
(45)	Clear plastic with adhesive(sticker, switch, PCB, controller, earphone)	BL	BL	BL	BL	BL
(46)	Silvery metal(clips, switch, PCB, controller, earphone)	BL	BL	BL	BL	---
(47)	Black body(SMD resistor, PCB, controller, earphone)	BL	BL	BL	BL	BL
(48)	Blue coated beige plastic with coppery metal(PCB, controller, earphone)	BL	BL	BL	BL	BL
(49)	Silvery solder(PCB, controller, earphone, raw material)	BL	BL	BL	BL	---
(50)	White soft plastic(clip, controller, earphone)	BL	BL	BL	BL	BL
(51)	Black printed white plastic(cover, speaker, earphone)	BL	BL	BL	BL	BL
(52)	Black fabric with adhesive(big net, cover, speaker, earphone)	BL	BL	BL	BL	BL
(53)	Black fabric with adhesive(small net, cover, speaker, earphone)	BL	BL	BL	BL	BL
(54)	White soft plastic(sleeve, cover, speaker, earphone)	BL	BL	BL	BL	BL
(55)	White foam with adhesive(sticker, speaker, earphone)	BL	BL	BL	BL	BL
(56)	White dry glue(PCB, speaker, earphone)	BL	BL	BL	BL	BL

Bay Area Compliance Laboratories Corp. (Shenzhen)

5/F. (B-West), 6&7/F., The 3rd Phase of Wanli Industrial Building D, Shihua Road, Fubao Community, Fubao Subdistrict, Futian District, Shenzhen, Guangdong, China

QB-CH-R001 (V1.0)

Tel: +86-755-33320018 Fax: +86-755-33320008

TEST REPORT

Report No.: 2401V87266E

Date: September 03, 2024

Page 5 of 51

Seq No.	Tested Part(s)	Result				
		Pb	Cd	Hg	Cr	Br
(57)*	Green coated beige plastic with coppery metal(PCB, speaker, earphone)	BL	BL	BL	BL	X
(58)	Silvery solder(PCB, speaker, earphone, raw material)	BL	BL	BL	BL	---
(59)	Silvery metal(cover, speaker, earphone)	BL	BL	BL	BL	---
(60)	Clear plastic with red dry glue(film, speaker, earphone)	BL	BL	BL	BL	BL
(61)	Coppery metal(coil, speaker, earphone)	BL	BL	BL	BL	---
(62)	Silvery metal(slice, speaker, earphone)	BL	BL	BL	BL	---
(63)	Silvery magnet(slice, speaker, earphone)	BL	BL	BL	BL	---
(64)	White soft plastic(thick wire jacket, speaker, earphone)	BL	BL	BL	BL	BL
(65)	White soft plastic(thin wire jacket, speaker, earphone)	BL	BL	BL	BL	BL
(66)	Coppery enameled wire(inner wire, speaker, earphone)	BL	BL	BL	BL	BL
(67)	Blue enameled wire(inner wire, speaker, earphone)	BL	BL	BL	BL	BL
(68)	Red enameled wire(inner wire, speaker, earphone)	BL	BL	BL	BL	BL
(69)	Green enameled wire(inner wire, speaker, earphone)	BL	BL	BL	BL	BL
(70)	Coppery/red enameled wire(inner wire, speaker, earphone)	BL	BL	BL	BL	BL
(71)	White soft plastic(wire clip, earphone)	BL	BL	BL	BL	BL
(72)	Silvery metal(pin, adapter)	BL	BL	BL	BL	---
(73)	White plastic(pin holder, adapter)	BL	BL	BL	BL	BL
(74)	Black printed white plastic(shell, adapter)	BL	BL	BL	BL	BL
(75)	Brown glue(inner, shell, adapter)	BL	BL	BL	BL	BL
(76)	Silvery metal(contact chip, PCB, adapter)	BL	BL	BL	BL	---
(77)	White dry glue(PCB, adapter)	BL	BL	BL	BL	BL
(78)	Black plastic(insulation sheet, PCB, adapter)	BL	BL	BL	BL	BL
(79)	Silvery metal(cover, USB socket, PCB, adapter)	BL	BL	BL	BL	---
(80)	White plastic(pin holder, USB socket, PCB, adapter)	BL	BL	BL	BL	BL
(81)	Silvery metal(pin, USB socket, PCB, adapter)	BL	BL	BL	BL	---
(82)	Red printed silvery body(capacitor"C8", PCB, adapter)	BL	BL	BL	BL	BL
(83)	Gray printed green plastic(sleeve, capacitor"C9", PCB, adapter)	BL	BL	BL	BL	BL
(84)	Silvery body(capacitor"C9", PCB, adapter)	BL	BL	BL	BL	BL
(85)	Gray printed green plastic(sleeve, capacitor"C4", PCB, adapter)	BL	BL	BL	BL	BL
(86)	Silvery body(capacitor"C4", PCB, adapter)	BL	BL	BL	BL	BL

TEST REPORT

Report No.: 2401V87266E

Date: September 03, 2024

Page 6 of 51

Seq No.	Tested Part(s)	Result				
		Pb	Cd	Hg	Cr	Br
(87)	Gray printed green plastic(sleeve, capacitor"C1""C2", PCB, adapter)	BL	BL	BL	BL	BL
(88)	Silvery body(capacitor"C1""C2", PCB, adapter)	BL	BL	BL	BL	BL
(89)	Brown body(fuse, PCB, adapter)	BL	BL	BL	BL	BL
(90)	Blue body(capacitor"CY1", PCB, adapter)	BL	BL	BL	BL	BL
(91)	Silvery metal(pin, capacitor"CY1", PCB, adapter)	BL	BL	BL	BL	---
(92)	Blue body(capacitor"C3", PCB, adapter)	BL	BL	BL	BL	BL
(93)	White printed black body(capacitor, PCB, adapter)	BL	BL	BL	BL	BL
(94)	White printed black plastic(sleeve, inductor"L1", PCB, adapter)	BL	BL	BL	BL	BL
(95)	Coppery metal(coil, inductor"L1", PCB, adapter)	BL	BL	BL	BL	---
(96)	Gray magnet(coil holder, inductor"L1", PCB, adapter)	BL	BL	BL	BL	---
(97)	Black printed yellow plastic with adhesive(tape, transformer, PCB, adapter)	BL	BL	BL	BL	BL
(98)	Black magnet(frame, transformer, PCB, adapter)	BL	BL	BL	BL	---
(99)	Black plastic(frame, transformer, PCB, adapter)	BL	BL	BL	BL	BL
(100)	Coppery metal(coil, transformer, PCB, adapter)	BL	BL	BL	BL	---
(101)	Yellow enameled wire(coil, transformer, PCB, adapter)	BL	BL	BL	BL	BL
(102)	Translucent plastic(sleeve, coil, transformer, PCB, adapter)	BL	BL	BL	BL	BL
(103)	Silvery metal(pin, transformer, PCB, adapter)	BL	BL	BL	BL	---
(104)	Black plastic(cover, triode"Q1", PCB, adapter, raw material)	BL	BL	BL	BL	BL
(105)	Coppery metal(slice, triode"Q1", PCB, adapter, raw material)	BL	BL	BL	BL	---
(106)*2	Silvery solder(triode"Q1", PCB, adapter, raw material)	OL (859054)	BL	BL	BL	---
(107)	Silvery metal(pin, triode"Q1", PCB, adapter, raw material)	BL	BL	BL	BL	---
(108)	Black body(IC"U3", PCB, adapter)	BL	BL	BL	BL	BL
(109)	Black body(IC"U2", PCB, adapter)	BL	BL	BL	BL	BL
(110)	Black body(IC"U1", PCB, adapter)	BL	BL	BL	BL	BL
(111)	Black body(SMD bridge rectifier, PCB, adapter)	BL	BL	BL	BL	BL
(112)	Black body(big SMD diode, PCB, adapter)	BL	BL	BL	BL	BL
(113)	Black body(small SMD diode, PCB, adapter)	BL	BL	BL	BL	BL
(114)	Black body(SMD inductor, PCB, adapter)	BL	BL	BL	BL	BL
(115)	Black/white body(big SMD resistor, PCB, adapter)	BL	BL	BL	BL	BL

TEST REPORT

Report No.: 2401V87266E

Date: September 03, 2024

Page 7 of 51

Seq No.	Tested Part(s)	Result				
		Pb	Cd	Hg	Cr	Br
(116)	Black/white body(small SMD resistor, PCB, adapter)	BL	BL	BL	BL	BL
(117)	Brown body(SMD capacitor, PCB, adapter)	BL	BL	BL	BL	BL
(118)*	White printed green coated beige plastic with coppery metal(PCB, adapter)	BL	BL	BL	BL	X
(119)	Silvery solder(PCB, adapter)	BL	BL	BL	BL	---
(120)	Silvery metal(cover, SIM/SD tray, Smart phone)	BL	BL	BL	BL	---
(121)	Black plastic(frame, SIM/SD tray, Smart phone)	BL	BL	BL	BL	BL
(122)	Silvery metal(frame, SIM/SD tray, Smart phone)	BL	BL	BL	BL	---
(123)	Black plated silvery metal(cover, button, Smart phone)	BL	BL	BL	BL	---
(124)	Black plastic(cover, button, Smart phone)	BL	BL	BL	BL	BL
(125)	Gun metal plated silvery metal(frame, rear cover, Smart phone)	BL	BL	BL	BL	---
(126)	Black plated silvery metal(big screw, frame, rear cover, Smart phone)	BL	BL	BL	BL	---
(127)	Black plated silvery metal(small screw, frame, rear cover, Smart phone)	BL	BL	BL	BL	---
(128)	Black plastic(cover, SIM/SD tray, rear cover, Smart phone)	BL	BL	BL	BL	BL
(129)	Black plastic(cover, charging port, rear cover, Smart phone)	BL	BL	BL	BL	BL
(130)	Black soft plastic(rear cover, Smart phone)	BL	BL	BL	BL	BL
(131)	Orange plastic(rear cover, Smart phone)	BL	BL	BL	BL	BL
(132)	Black coated clear glass(camera cover, rear cover, Smart phone)	BL	BL	BL	BL	BL
(133)	Clear plastic(LED cover, rear cover, Smart phone)	BL	BL	BL	BL	BL
(134)	Black coated silvery metal(holder, LED cover/camera cover, rear cover, Smart phone)	BL	BL	BL	BL	BL
(135)	Black/silvery coated clear plastic(logo, rear cover, Smart phone)	BL	BL	BL	BL	BL
(136)	Black plastic with adhesive(sticker, logo, rear cover, Smart phone)	BL	BL	BL	BL	BL
(137)	Black/brown plastic with coppery metal(FPC, rear cover, Smart phone)	BL	BL	BL	BL	BL
(138)	Black/silvery plastic with adhesive(sticker, rear cover, Smart phone)	BL	BL	BL	BL	BL
(139)	Black fabric with adhesive(net, rear cover, Smart phone)	BL	BL	BL	BL	BL
(140)*1	Golden metal(nut, rear cover, Smart phone)	OL (11815)	BL	BL	BL	---
(141)*1	Golden metal(big contact pin, rear cover, Smart phone)	OL (21240)	BL	BL	BL	---
(142)*1	Golden metal(small contact pin, rear cover, Smart phone)	OL (11676)	BL	BL	BL	---
(143)	Black foam with adhesive(frame, rear cover, Smart phone)	BL	BL	BL	BL	BL

TEST REPORT

Report No.: 2401V87266E

Date: September 03, 2024

Page 8 of 51

Seq No.	Tested Part(s)	Result				
		Pb	Cd	Hg	Cr	Br
(144)	White dry glue(rear cover, Smart phone)	BL	BL	BL	BL	BL
(145)	Silvery fabric with adhesive(sticker, small screen, rear cover, Smart phone)	BL	BL	BL	BL	BL
(146)	Black foam with adhesive(sticker, small screen, rear cover, Smart phone)	BL	BL	BL	BL	BL
(147)	Yellow clear plastic with adhesive(sticker, small screen, rear cover, Smart phone)	BL	BL	BL	BL	BL
(148)	Black body(IC, FPC, small screen, rear cover, Smart phone)	BL	BL	BL	BL	BL
(149)	Black body(SMD diode, FPC, small screen, rear cover, Smart phone)	BL	BL	BL	BL	BL
(150)	Black body(SMD resistor, FPC, small screen, rear cover, Smart phone)	BL	BL	BL	BL	BL
(151)	Brown body(SMD capacitor, FPC, small screen, rear cover, Smart phone)	BL	BL	BL	BL	BL
(152)	Clear double faced adhesive tape(small screen, rear cover, Smart phone)	BL	BL	BL	BL	BL
(153)	White printed black/brown coated plastic with coppery metal(FPC, small screen, Smart phone)	BL	BL	BL	BL	BL
(154)	Silvery solder(FPC, small screen, Smart phone)	BL	BL	BL	BL	---
(155)	Black plastic(socket, FPC, small screen, Smart phone)	BL	BL	BL	BL	BL
(156)	Golden metal(pin, socket, FPC, small screen, Smart phone)	BL	BL	BL	BL	---
(157)	Silvery metal(base, small screen, Smart phone)	BL	BL	BL	BL	---
(158)	Gray plastic(frame, small screen, Smart phone)	BL	BL	BL	BL	BL
(159)	Clear plastic(film, small screen, Smart phone)	BL	BL	BL	BL	BL
(160)	Silvery metal(film, small screen, Smart phone)	BL	BL	BL	BL	---
(161)	White translucent plastic(film, small screen, Smart phone)	BL	BL	BL	BL	BL
(162)	Silvery translucent plastic(film, small screen, Smart phone)	BL	BL	BL	BL	BL
(163)	Black clear plastic with adhesive(polaroid, small screen, Smart phone)	BL	BL	BL	BL	BL
(164)	Black clear glass with liquid crystal(small screen, rear cover, Smart phone)	BL	BL	BL	BL	BL
(165)	Black coated clear glass(cover, small screen, rear cover, Smart phone)	BL	BL	BL	BL	BL
(166)	White body(LED, small screen, rear cover, Smart phone)	BL	BL	BL	BL	BL
(167)	Brown plastic with coppery metal(LED FPC, small screen, rear cover, Smart phone)	BL	BL	BL	BL	BL
(168)	Black plated silvery metal(screw, front shell, Smart phone)	BL	BL	BL	BL	---
(169)	Silvery metal(screw, front shell, Smart phone)	BL	BL	BL	BL	---
(170)	Silvery metal(stator, front shell, Smart phone)	BL	BL	BL	BL	---
(171)	Silvery metal(front shell, Smart phone)	BL	BL	BL	BL	---
(172)	Black plastic(front shell, Smart phone)	BL	BL	BL	BL	BL
(173)	Black body(fingerprint recognition module, Smart phone)	BL	BL	BL	BL	BL

TEST REPORT

Report No.: 2401V87266E

Date: September 03, 2024

Page 9 of 51

Seq No.	Tested Part(s)	Result				
		Pb	Cd	Hg	Cr	Br
(174)	Black plastic with coppery metal(FPC, fingerprint recognition module, Smart phone)	BL	BL	BL	BL	BL
(175)	Black plastic with coppery metal(antennae FPC, middle cover, Smart phone)	BL	BL	BL	BL	BL
(176)	Brown plastic with coppery metal(LED FPC, middle cover, Smart phone)	BL	BL	BL	BL	BL
(177)	Yellow body(LED, middle cover, Smart phone)	BL	BL	BL	BL	BL
(178)	Silvery metal(reinforcing plate, LED FPC, middle cover, Smart phone)	BL	BL	BL	BL	---
(179)	White fabric with adhesive(sticker, middle cover, Smart phone)	BL	BL	BL	BL	BL
(180)	Black plastic(cover, big speaker/middle cover, Smart phone)	BL	BL	BL	BL	BL
(181)*1	Golden metal(pin, contact pin, middle cover, Smart phone)	OL (11240)	BL	BL	BL	---
(182)	Golden metal(spring, contact pin, middle cover, Smart phone)	BL	BL	BL	BL	---
(183)*1	Golden metal(base, contact pin, middle cover, Smart phone)	OL (11113)	BL	BL	BL	---
(184)	Black plated silvery metal with adhesive(net, holder, big speaker, Smart phone)	BL	BL	BL	BL	---
(185)	Black plastic(wire jacket, big speaker, Smart phone)	BL	BL	BL	BL	BL
(186)	Red plastic(wire jacket, big speaker, Smart phone)	BL	BL	BL	BL	BL
(187)	Silvery metal(wire, big speaker, Smart phone)	BL	BL	BL	BL	---
(188)	Silvery solder(big speaker, Smart phone)	BL	BL	BL	BL	---
(189)	Silvery metal(contact chip, big speaker, Smart phone)	BL	BL	BL	BL	---
(190)	Silvery metal(film, big speaker, Smart phone)	BL	BL	BL	BL	---
(191)	Clear plastic with red dry glue(film, big speaker, Smart phone)	BL	BL	BL	BL	BL
(192)	Coppery metal(coil, big speaker, Smart phone)	BL	BL	BL	BL	---
(193)	Black plastic(frame, big speaker, Smart phone)	BL	BL	BL	BL	BL
(194)	Silvery metal(frame, big speaker, Smart phone)	BL	BL	BL	BL	---
(195)	Silvery metal(slice, big speaker, Smart phone)	BL	BL	BL	BL	---
(196)	Silvery magnet(slice, big speaker, Smart phone)	BL	BL	BL	BL	---
(197)	Silvery metal(base, big speaker, Smart phone)	BL	BL	BL	BL	---
(198)	Black plastic(wire jacket, small speaker, Smart phone)	BL	BL	BL	BL	BL
(199)	Red plastic(wire jacket, small speaker, Smart phone)	BL	BL	BL	BL	BL
(200)	Silvery metal(wire, small speaker, Smart phone)	BL	BL	BL	BL	---
(201)	Silvery metal(contact chip, small speaker, Smart phone)	BL	BL	BL	BL	---

TEST REPORT

Report No.: 2401V87266E

Date: September 03, 2024

Page 10 of 51

Seq No.	Tested Part(s)	Result				
		Pb	Cd	Hg	Cr	Br
(202)	Black dry glue(contact chip, small speaker, Smart phone)	BL	BL	BL	BL	BL
(203)	Silvery solder(contact chip, small speaker, Smart phone)	BL	BL	BL	BL	---
(204)	Black plastic(frame, small speaker, Smart phone)	BL	BL	BL	BL	BL
(205)	Silvery metal(frame, small speaker, Smart phone)	BL	BL	BL	BL	---
(206)	Clear plastic with dry glue(film, small speaker, Smart phone)	BL	BL	BL	BL	BL
(207)	Coppery metal(coil, small speaker, Smart phone)	BL	BL	BL	BL	---
(208)	Silvery metal(slice, small speaker, Smart phone)	BL	BL	BL	BL	---
(209)	Silvery magnet(slice, small speaker, Smart phone)	BL	BL	BL	BL	---
(210)	Black soft plastic(sleeve, front camera, Smart phone)	BL	BL	BL	BL	BL
(211)	Black plastic(frame, front camera, Smart phone)	BL	BL	BL	BL	BL
(212)	Black plastic(cover, front camera, Smart phone)	BL	BL	BL	BL	BL
(213)	Blue clear glass(lens, front camera, Smart phone)	BL	BL	BL	BL	---
(214)	Clear plastic(big lens, front camera, Smart phone)	BL	BL	BL	BL	BL
(215)	Clear plastic(middle lens, front camera, Smart phone)	BL	BL	BL	BL	BL
(216)	Clear plastic(small lens, front camera, Smart phone)	BL	BL	BL	BL	BL
(217)	Black plated silvery metal(big gasket, front camera, Smart phone)	BL	BL	BL	BL	---
(218)	Black plated silvery metal(small gasket, front camera, Smart phone)	BL	BL	BL	BL	---
(219)	Black plastic(big gasket, front camera, Smart phone)	BL	BL	BL	BL	BL
(220)	Black plastic(small gasket, front camera, Smart phone)	BL	BL	BL	BL	BL
(221)	Black body(IC, front camera, Smart phone)	BL	BL	BL	BL	BL
(222)	Brown body(SMD capacitor, front camera, Smart phone)	BL	BL	BL	BL	BL
(223)	White printed brown plastic with coppery metal(FPC, front camera, Smart phone)	BL	BL	BL	BL	BL
(224)	Silvery metal(reinforcing plate, FPC, front camera, Smart phone)	BL	BL	BL	BL	---
(225)	Black foam with adhesive(sticker, FPC, front camera, Smart phone)	BL	BL	BL	BL	BL
(226)	Silvery fabric with adhesive(sticker, FPC, front camera, Smart phone)	BL	BL	BL	BL	BL
(227)	Black plastic(socket, FPC, front camera, Smart phone)	BL	BL	BL	BL	BL
(228)	Golden metal(pin, socket, FPC, front camera, Smart phone)	BL	BL	BL	BL	---
(229)	Black soft plastic(sleeve, back big camera, Smart phone)	BL	BL	BL	BL	BL
(230)	Silvery metal(frame, back big camera, Smart phone)	BL	BL	BL	BL	---
(231)	Silvery magnet(slice, back big camera, Smart phone)	BL	BL	BL	BL	---

TEST REPORT

Report No.: 2401V87266E

Date: September 03, 2024

Page 11 of 51

Seq No.	Tested Part(s)	Result				
		Pb	Cd	Hg	Cr	Br
(232)	Coppery metal(loop, back big camera, Smart phone)	BL	BL	BL	BL	---
(233)	Coppery metal(coil, back big camera, Smart phone)	BL	BL	BL	BL	---
(234)	Black plastic(loop, back big camera, Smart phone)	BL	BL	BL	BL	BL
(235)	Black plastic(big gasket, back big camera, Smart phone)	BL	BL	BL	BL	BL
(236)	Black plastic(middle gasket, back big camera, Smart phone)	BL	BL	BL	BL	BL
(237)	Black plastic(small gasket, back big camera, Smart phone)	BL	BL	BL	BL	BL
(238)	Clear plastic(big lens, back big camera, Smart phone)	BL	BL	BL	BL	BL
(239)	Clear plastic(middle lens, back big camera, Smart phone)	BL	BL	BL	BL	BL
(240)	Clear plastic(small lens, back big camera, Smart phone)	BL	BL	BL	BL	BL
(241)	Blue clear glass(lens, back big camera, Smart phone)	BL	BL	BL	BL	---
(242)	Black plastic(lens holder, back big camera, Smart phone)	BL	BL	BL	BL	BL
(243)	Black body(IC, back big camera, Smart phone)	BL	BL	BL	BL	BL
(244)	Brown body(SMD capacitor, back big camera, Smart phone)	BL	BL	BL	BL	BL
(245)	White printed brown plastic with coppery metal(FPC, back big camera, Smart phone)	BL	BL	BL	BL	BL
(246)	Black foam with adhesive(sticker, FPC, back big camera, Smart phone)	BL	BL	BL	BL	BL
(247)	Silvery fabric with adhesive(sticker, FPC, back big camera, Smart phone)	BL	BL	BL	BL	BL
(248)	Golden metal(pin, socket, FPC, back big camera, Smart phone)	BL	BL	BL	BL	---
(249)	Black plastic(socket, FPC, back big camera, Smart phone)	BL	BL	BL	BL	BL
(250)	Black soft plastic(sleeve, back middle camera, Smart phone)	BL	BL	BL	BL	BL
(251)	Black plastic(frame, back middle camera, Smart phone)	BL	BL	BL	BL	BL
(252)	Black plastic(cover, back middle camera, Smart phone)	BL	BL	BL	BL	BL
(253)	Black plastic(big gasket, back middle camera, Smart phone)	BL	BL	BL	BL	BL
(254)	Black plastic(middle gasket, back middle camera, Smart phone)	BL	BL	BL	BL	BL
(255)	Black plastic(small gasket, back middle camera, Smart phone)	BL	BL	BL	BL	BL
(256)	Clear plastic(big lens, back middle camera, Smart phone)	BL	BL	BL	BL	BL
(257)	Clear plastic(middle lens, back middle camera, Smart phone)	BL	BL	BL	BL	BL
(258)	Clear plastic(small lens, back middle camera, Smart phone)	BL	BL	BL	BL	BL
(259)	Blue clear glass(lens, back middle camera, Smart phone)	BL	BL	BL	BL	---
(260)	Black plastic(base, back middle camera, Smart phone)	BL	BL	BL	BL	BL
(261)	Black body(IC, back middle camera, Smart phone)	BL	BL	BL	BL	BL

Bay Area Compliance Laboratories Corp. (Shenzhen)

5/F. (B-West), 6&7/F., The 3rd Phase of Wanli Industrial Building D, Shihua Road, Fubao Community, Fubao Subdistrict, Futian District, Shenzhen, Guangdong, China

QB-CH-R001 (V1.0)

Tel: +86-755-33320018 Fax: +86-755-33320008

TEST REPORT

Report No.: 2401V87266E

Date: September 03, 2024

Page 12 of 51

Seq No.	Tested Part(s)	Result				
		Pb	Cd	Hg	Cr	Br
(262)	Brown body(SMD capacitor, back middle camera, Smart phone)	BL	BL	BL	BL	BL
(263)	Black soft plastic(sleeve, back small camera, Smart phone)	BL	BL	BL	BL	BL
(264)	Black plastic(frame, back small camera, Smart phone)	BL	BL	BL	BL	BL
(265)	Black plastic(cover, back small camera, Smart phone)	BL	BL	BL	BL	BL
(266)	Clear plastic(lens, back small camera, Smart phone)	BL	BL	BL	BL	BL
(267)	Black body(IC, back small camera, Smart phone)	BL	BL	BL	BL	BL
(268)	Brown body(SMD capacitor, back small camera, Smart phone)	BL	BL	BL	BL	BL
(269)	White printed brown plastic with coppery metal(FPC, small/middle camera, Smart phone)	BL	BL	BL	BL	BL
(270)	Silvery metal(reinforcing plate, FPC, small/middle camera, Smart phone)	BL	BL	BL	BL	---
(271)	Black foam with adhesive(sticker, FPC, small/middle camera, Smart phone)	BL	BL	BL	BL	BL
(272)	Golden metal(pin, socket, FPC, small/middle camera, Smart phone)	BL	BL	BL	BL	---
(273)	Black plastic(socket, FPC, small/middle camera, Smart phone)	BL	BL	BL	BL	BL
(274)	Blue plastic(wire jacket, motor, Smart phone)	BL	BL	BL	BL	BL
(275)	Red plastic(wire jacket, motor, Smart phone)	BL	BL	BL	BL	BL
(276)	Silvery metal(wire, motor, Smart phone)	BL	BL	BL	BL	---
(277)	Black plastic(sticker, motor, Smart phone)	BL	BL	BL	BL	BL
(278)	Silvery fabric with adhesive(motor, Smart phone)	BL	BL	BL	BL	BL
(279)	Clear dry glue(motor, Smart phone)	BL	BL	BL	BL	BL
(280)	Silvery metal(cover, motor, Smart phone)	BL	BL	BL	BL	---
(281)	Clear plastic with adhesive(inner sticker, motor, Smart phone)	BL	BL	BL	BL	BL
(282)	Silvery magnet(loop, motor, Smart phone)	BL	BL	BL	BL	---
(283)	Silvery metal(pole, motor, Smart phone)	BL	BL	BL	BL	---
(284)	Brown plastic with coppery metal(FPC, motor, Smart phone)	BL	BL	BL	BL	BL
(285)	Green coated brown plastic with coppery metal(PCB, motor, Smart phone)	BL	BL	BL	BL	BL
(286)	White plastic(holder, motor, Smart phone)	BL	BL	BL	BL	BL
(287)	Silvery metal(rotor, motor, Smart phone)	BL	BL	BL	BL	---
(288)	Coppery metal(bearing, motor, Smart phone)	BL	BL	BL	BL	---
(289)	Coppery metal(coil, motor, Smart phone)	BL	BL	BL	BL	---
(290)	Black plastic with adhesive(sticker, side switch, Smart phone)	BL	BL	BL	BL	BL
(291)	Silvery metal(clips, side switch, Smart phone)	BL	BL	BL	BL	---

Bay Area Compliance Laboratories Corp. (Shenzhen)

5/F. (B-West), 6&7/F., The 3rd Phase of Wanli Industrial Building D, Shihua Road, Fubao Community, Fubao Subdistrict, Futian District, Shenzhen, Guangdong, China

QB-CH-R001 (V1.0)

Tel: +86-755-33320018 Fax: +86-755-33320008

TEST REPORT

Report No.: 2401V87266E

Date: September 03, 2024

Page 13 of 51

Seq No.	Tested Part(s)	Result				
		Pb	Cd	Hg	Cr	Br
(292)	Brown plastic with coppery metal(FPC, side switch, Smart phone)	BL	BL	BL	BL	BL
(293)	Silvery metal(reinforcing plate, FPC, side switch, Smart phone)	BL	BL	BL	BL	---
(294)	Clear double faced adhesive tape(reinforcing plate, FPC, side switch, Smart phone)	BL	BL	BL	BL	BL
(295)	Black soft plastic(sleeve, MIC, Smart phone)	BL	BL	BL	BL	BL
(296)	Golden body(MIC, Smart phone)	BL	BL	BL	BL	BL
(297)	White printed black plastic with coppery metal(FPC, MIC, Smart phone)	BL	BL	BL	BL	BL
(298)	Silvery metal(reinforcing plate, FPC, MIC, Smart phone)	BL	BL	BL	BL	---
(299)	Black plastic(gasket, charging port, Smart phone)	BL	BL	BL	BL	BL
(300)	Silvery metal(holder, charging port, Smart phone)	BL	BL	BL	BL	---
(301)	Silvery metal(cover, charging port, Smart phone)	BL	BL	BL	BL	---
(302)	Black plastic(pin holder, charging port, Smart phone)	BL	BL	BL	BL	BL
(303)	Golden metal(pin, charging port, Smart phone)	BL	BL	BL	BL	---
(304)	White printed black/brown plastic with coppery metal(FPC, charging port, Smart phone)	BL	BL	BL	BL	BL
(305)	Silvery metal(reinforcing plate, FPC, charging port, Smart phone)	BL	BL	BL	BL	---
(306)	Silvery fabric with adhesive(sticker, FPC, charging port, Smart phone)	BL	BL	BL	BL	BL
(307)	Silvery metal(stator, socket, FPC, charging port, Smart phone)	BL	BL	BL	BL	---
(308)	Golden metal(pin, socket, FPC, charging port, Smart phone)	BL	BL	BL	BL	---
(309)	Black plastic(pin holder, socket, FPC, charging port, Smart phone)	BL	BL	BL	BL	BL
(310)	White printed black/brown plastic with coppery metal(FPC, connect, PCB, Smart phone)	BL	BL	BL	BL	BL
(311)	Silvery metal(stator, socket, FPC, connect, PCB, Smart phone)	BL	BL	BL	BL	---
(312)	Golden metal(pin, socket, FPC, connect, PCB, Smart phone)	BL	BL	BL	BL	---
(313)	Black plastic(pin holder, socket, FPC, connect, PCB, Smart phone)	BL	BL	BL	BL	BL
(314)	Golden metal(cover, plug, connecting line, PCB, Smart phone)	BL	BL	BL	BL	---
(315)	Black plastic(pin holder, plug, connecting line, PCB, Smart phone)	BL	BL	BL	BL	BL
(316)	Golden metal(pin, plug, connecting line, PCB, Smart phone)	BL	BL	BL	BL	---
(317)	Black plastic(wire jacket, connecting line, PCB, Smart phone)	BL	BL	BL	BL	BL
(318)	Silvery metal(net, connecting line, PCB, Smart phone)	BL	BL	BL	BL	---
(319)	Translucent plastic(inner wire jacket, connecting line, PCB, Smart phone)	BL	BL	BL	BL	BL

TEST REPORT

Report No.: 2401V87266E

Date: September 03, 2024

Page 14 of 51

Seq No.	Tested Part(s)	Result				
		Pb	Cd	Hg	Cr	Br
(320)	Silvery metal(inner wire, connecting line, PCB, Smart phone)	BL	BL	BL	BL	---
(321)	Silvery metal(screw, big/small PCB, Smart phone)	BL	BL	BL	BL	---
(322)	Black plastic(pin holder, big FPC socket, small PCB, Smart phone)	BL	BL	BL	BL	BL
(323)	Silvery metal(stator, big FPC socket, small PCB, Smart phone)	BL	BL	BL	BL	---
(324)	Golden metal(pin, big FPC socket, small PCB, Smart phone)	BL	BL	BL	BL	---
(325)	Black plastic(pin holder, small FPC socket, small PCB, Smart phone)	BL	BL	BL	BL	BL
(326)	Silvery metal(stator, small FPC socket, small PCB, Smart phone)	BL	BL	BL	BL	---
(327)	Golden metal(pin, small FPC socket, small PCB, Smart phone)	BL	BL	BL	BL	---
(328)	Black plastic(pin holder, socket, small PCB, Smart phone)	BL	BL	BL	BL	BL
(329)	Black plastic(cover, socket, small PCB, Smart phone)	BL	BL	BL	BL	BL
(330)	Silvery metal(pin, socket, small PCB, Smart phone)	BL	BL	BL	BL	---
(331)	Silvery metal(cover, connect socket, small PCB, Smart phone)	BL	BL	BL	BL	---
(332)	Black plastic(pin holder, connect socket, small PCB, Smart phone)	BL	BL	BL	BL	BL
(333)	Silvery metal(pin, connect socket, small PCB, Smart phone)	BL	BL	BL	BL	---
(334)	Black body(big square IC, small PCB, Smart phone)	BL	BL	BL	BL	BL
(335)	Black body(small square IC, small PCB, Smart phone)	BL	BL	BL	BL	BL
(336)	Black body(rectangle IC, small PCB, Smart phone)	BL	BL	BL	BL	BL
(337)	Black body(SMD diode, small PCB, Smart phone)	BL	BL	BL	BL	BL
(338)	Brown body(SMD capacitor, small PCB, Smart phone)	BL	BL	BL	BL	BL
(339)	Black/white body(SMD resistor, small PCB, Smart phone)	BL	BL	BL	BL	BL
(340)*	Black coated brown plastic with coppery metal(small PCB, Smart phone)	BL	BL	BL	BL	X
(341)	Silvery solder(small PCB, Smart phone)	BL	BL	BL	BL	---
(342)	Silvery metal(contact pin, small PCB, Smart phone)	BL	BL	BL	BL	---
(343)	Pink dry glue(main PCB, Smart phone)	BL	BL	BL	BL	BL
(344)	Coppery metal with adhesive(sticker, main PCB, Smart phone)	BL	BL	BL	BL	BL
(345)	Silvery metal(cover, main PCB, Smart phone)	BL	BL	BL	BL	---
(346)	Yellow coated silvery metal(cover, main PCB, Smart phone)	BL	BL	BL	BL	BL
(347)	Yellow clear plastic with adhesive(cover, main PCB, Smart phone)	BL	BL	BL	BL	BL
(348)	Gray thermal grease(main PCB, Smart phone)	BL	BL	BL	BL	BL
(349)	Silvery metal(cover, TF/SIM socket, main PCB, Smart phone)	BL	BL	BL	BL	---

TEST REPORT

Report No.: 2401V87266E

Date: September 03, 2024

Page 15 of 51

Seq No.	Tested Part(s)	Result				
		Pb	Cd	Hg	Cr	Br
(350)	Silvery metal(frame, TF/SIM socket, main PCB, Smart phone)	BL	BL	BL	BL	---
(351)	Silvery metal(hook, TF/SIM socket, main PCB, Smart phone)	BL	BL	BL	BL	---
(352)	Silvery metal(pole, TF/SIM socket, main PCB, Smart phone)	BL	BL	BL	BL	---
(353)	Silvery metal(big pin, TF/SIM socket, main PCB, Smart phone)	BL	BL	BL	BL	---
(354)	Silvery metal(small pin, TF/SIM socket, main PCB, Smart phone)	BL	BL	BL	BL	---
(355)	Black plastic(pin holder, big FPC socket, main PCB, Smart phone)	BL	BL	BL	BL	BL
(356)	Golden metal(pin, big FPC socket, main PCB, Smart phone)	BL	BL	BL	BL	---
(357)	Black plastic(pin holder, middle FPC socket, main PCB, Smart phone)	BL	BL	BL	BL	BL
(358)	Golden metal(pin, middle FPC socket, main PCB, Smart phone)	BL	BL	BL	BL	---
(359)	Black plastic(pin holder, small FPC socket, main PCB, Smart phone)	BL	BL	BL	BL	BL
(360)	Golden metal(pin, small FPC socket, main PCB, Smart phone)	BL	BL	BL	BL	---
(361)	Black plastic(pin holder, big socket, main PCB, Smart phone)	BL	BL	BL	BL	BL
(362)	Golden metal(pin, big socket, main PCB, Smart phone)	BL	BL	BL	BL	---
(363)	Silvery metal(stator, big socket, main PCB, Smart phone)	BL	BL	BL	BL	---
(364)	Black plastic(pin holder, small socket, main PCB, Smart phone)	BL	BL	BL	BL	BL
(365)	Golden metal(pin, small socket, main PCB, Smart phone)	BL	BL	BL	BL	---
(366)	Silvery metal(stator, small socket, main PCB, Smart phone)	BL	BL	BL	BL	---
(367)	Silvery metal(cover, connect socket, main PCB, Smart phone)	BL	BL	BL	BL	---
(368)	Black plastic(pin holder, connect socket, main PCB, Smart phone)	BL	BL	BL	BL	BL
(369)	Silvery metal(pin, connect socket, main PCB, Smart phone)	BL	BL	BL	BL	---
(370)	Black soft plastic(sleeve, photosensitive element, main PCB, Smart phone)	BL	BL	BL	BL	BL
(371)	Black body(photosensitive element, main PCB, Smart phone)	BL	BL	BL	BL	BL
(372)	Black body(CPU, main PCB, Smart phone)	BL	BL	BL	BL	BL
(373)	Black body(storage IC, main PCB, Smart phone)	BL	BL	BL	BL	BL
(374)	Black body(big square IC, main PCB, Smart phone)	BL	BL	BL	BL	BL
(375)	Black body(middle square IC, main PCB, Smart phone)	BL	BL	BL	BL	BL
(376)	Black body(small square IC, main PCB, Smart phone)	BL	BL	BL	BL	BL
(377)	Black body(mini square IC, main PCB, Smart phone)	BL	BL	BL	BL	BL
(378)	Black body(big rectangle IC, main PCB, Smart phone)	BL	BL	BL	BL	BL
(379)	Black body(small rectangle IC, main PCB, Smart phone)	BL	BL	BL	BL	BL

TEST REPORT

Report No.: 2401V87266E

Date: September 03, 2024

Page 16 of 51

Seq No.	Tested Part(s)	Result				
		Pb	Cd	Hg	Cr	Br
(380)	Black body(mirror face IC, main PCB, Smart phone)	BL	BL	BL	BL	BL
(381)	Gray body(SMD inductor, main PCB, Smart phone)	BL	BL	BL	BL	BL
(382)	Brown body(SMD capacitor, main PCB, Smart phone)	BL	BL	BL	BL	BL
(383)	Silvery body(SMD crystal oscillator, main PCB, Smart phone)	BL	BL	BL	BL	BL
(384)	Black/white body(SMD resistor, main PCB, Smart phone)	BL	BL	BL	BL	BL
(385)	Black body(SMD diode, main PCB, Smart phone)	BL	BL	BL	BL	BL
(386)	Clear body(SMD LED, main PCB, Smart phone)	BL	BL	BL	BL	BL
(387)	White body(SMD capacitor, main PCB, Smart phone)	BL	BL	BL	BL	BL
(388)	Black body(SMD resistor, main PCB, Smart phone)	BL	BL	BL	BL	BL
(389)	Silvery metal(contact pin, main PCB, Smart phone)	BL	BL	BL	BL	---
(390)	Silvery metal(holder, main PCB, Smart phone)	BL	BL	BL	BL	---
(391)	Black printed brown plastic with coppery metal(main PCB, Smart phone)	BL	BL	BL	BL	BL
(392)	Silvery solder(main PCB, Smart phone)	BL	BL	BL	BL	---
(393)	Black foam with adhesive(sticker, front shell, Smart phone)	BL	BL	BL	BL	BL
(394)	Silvery foam with adhesive(sticker, front shell, Smart phone)	BL	BL	BL	BL	BL
(395)	Black/silvery plastic with adhesive(sticker, front shell, Smart phone)	BL	BL	BL	BL	BL
(396)	Coppery metal with adhesive(sticker, front shell, Smart phone)	BL	BL	BL	BL	BL
(397)	Black body(SMD diode, FPC, big screen, Smart phone)	BL	BL	BL	BL	BL
(398)	Black body(SMD resistor, FPC, big screen, Smart phone)	BL	BL	BL	BL	BL
(399)	Brown body(SMD capacitor, FPC, big screen, Smart phone)	BL	BL	BL	BL	BL
(400)	Black/white printed brown plastic with coppery metal(FPC, big screen, Smart phone)	BL	BL	BL	BL	BL
(401)	Silvery solder(FPC, big screen, Smart phone)	BL	BL	BL	BL	---
(402)	Black plastic(socket, FPC, big screen, Smart phone)	BL	BL	BL	BL	BL
(403)	Golden metal(pin, socket, FPC, big screen, Smart phone)	BL	BL	BL	BL	---
(404)	Clear double faced adhesive tape(base, big screen, Smart phone)	BL	BL	BL	BL	BL
(405)	Silvery foam with adhesive(sticker, base, big screen, Smart phone)	BL	BL	BL	BL	BL
(406)	Black/silvery plastic with adhesive(sticker, base, big screen, Smart phone)	BL	BL	BL	BL	BL
(407)	Silvery metal(base, big screen, Smart phone)	BL	BL	BL	BL	---
(408)	Gray plastic(frame, big screen, Smart phone)	BL	BL	BL	BL	BL
(409)	Silvery plastic(film, big screen, Smart phone)	BL	BL	BL	BL	BL

Bay Area Compliance Laboratories Corp. (Shenzhen)

5/F. (B-West), 6&7/F., The 3rd Phase of Wanli Industrial Building D, Shihua Road, Fubao Community, Fubao Subdistrict, Futian District, Shenzhen, Guangdong, China

Tel: +86-755-33320018 Fax: +86-755-33320008

QB-CH-R001 (V1.0)

TEST REPORT

Report No.: 2401V87266E

Date: September 03, 2024

Page 17 of 51

Seq No.	Tested Part(s)	Result				
		Pb	Cd	Hg	Cr	Br
(410)	Transparent plastic(film, big screen, Smart phone)	BL	BL	BL	BL	BL
(411)	White translucent plastic(film, big screen, Smart phone)	BL	BL	BL	BL	BL
(412)	Silvery translucent plastic(film, big screen, Smart phone)	BL	BL	BL	BL	BL
(413)	Iridescent silvery plastic(film, big screen, Smart phone)	BL	BL	BL	BL	BL
(414)	White body(LED, big screen, Smart phone)	BL	BL	BL	BL	BL
(415)	White printed brown plastic with coppery metal(LED FPC, big screen, Smart phone)	BL	BL	BL	BL	BL
(416)	Black plastic with adhesive(tape, big screen, Smart phone)	BL	BL	BL	BL	BL
(417)	Black clear plastic(polaroid, big screen, Smart phone)	BL	BL	BL	BL	BL
(418)	Black clear glass with liquid crystal(big screen, Smart phone)	BL	BL	BL	BL	BL
(419)	Clear plastic with adhesive(cover, battery, Smart phone)	BL	BL	BL	BL	BL
(420)	Black plastic with adhesive(tape, battery, Smart phone)	BL	BL	BL	BL	BL
(421)	Green paper with adhesive(tape, battery, Smart phone)	BL	BL	BL	BL	BL
(422)	Yellow clear plastic with adhesive(tape, battery, Smart phone)	BL	BL	BL	BL	BL
(423)	Black body(SMD resistor, FPC, battery, Smart phone)	BL	BL	BL	BL	BL
(424)	Brown body(SMD capacitor, FPC, battery, Smart phone)	BL	BL	BL	BL	BL
(425)	Black body(IC, FPC, battery, Smart phone)	BL	BL	BL	BL	BL
(426)	Black coated brown plastic with coppery metal(FPC, battery, Smart phone)	BL	BL	BL	BL	BL
(427)	Silvery solder(FPC, battery, Smart phone)	BL	BL	BL	BL	---
(428)	Silvery metal(contact chip, FPC, battery, Smart phone)	BL	BL	BL	BL	---
(429)	Brown plastic(base, FPC, battery, Smart phone)	BL	BL	BL	BL	BL
(430)	Black plastic(socket, FPC, battery, Smart phone)	BL	BL	BL	BL	BL
(431)	Golden metal(pin, socket, FPC, battery, Smart phone)	BL	BL	BL	BL	---
(432)	Silvery metal(stator, socket, FPC, battery, Smart phone)	BL	BL	BL	BL	---
(433)	Black foam with adhesive(sticker, FPC, battery, Smart phone)	BL	BL	BL	BL	BL
(434)	Silvery metal(reinforcing plate, FPC, battery, Smart phone)	BL	BL	BL	BL	---

TEST REPORT

Report No.: 2401V87266E

Date: September 03, 2024

Page 18 of 51

Note:

--- = Not Applicable.

* = Screening by XRF and detected by chemical method. The test result of chemical method please refer to next pages.

*¹ = As claimed by the material declaration submitted by the client, the materials of the sample No. 140,141,142,181,183 are copper alloy. And according to RoHS directive 2011/65/EU and its amendments, Lead is exempted as an alloying element in Copper containing up to 4% (40000ppm) by weight.

*² = As claimed by the material declaration submitted by the client, the materials of the sample No. 106 is high melting temperature type solders. And according to RoHS directive 2011/65/EU and its amendments, Lead is exempted in high melting temperature type solders (i.e. lead-based alloys containing 85 % by weight or more lead).

TEST REPORT

Report No.: 2401V87266E

Date: September 03, 2024

Page 19 of 51

Remark:

i Result were obtained by XRF for primary screening, and further chemical testing by ICP (for Cd, Pb, Hg), UV-Vis (for Cr(VI)) and GC-MS (for PBBs, PBDEs) are recommended to be performed, if the concentration exceeds the below warning value according to IEC62321-3-1:2013.

Element	Unit	Polymers	Metal	Composite Material
Cd	mg/kg	BL≤70-3σ<X <130+3σ≤OL	BL≤70-3σ<X <130+3σ≤OL	BL≤50-3σ<X <150+3σ≤OL
Pb	mg/kg	BL≤700-3σ<X <1300+3σ≤OL	BL≤700-3σ<X <1300+3σ≤OL	BL≤500-3σ<X <1500+3σ≤OL
Hg	mg/kg	BL≤700-3σ<X <1300+3σ≤OL	BL≤700-3σ<X <1300+3σ≤OL	BL≤500-3σ<X <1500+3σ≤OL
Cr	mg/kg	BL≤700-3σ<X	BL≤700-3σ<X	BL≤500-3σ<X
Br	mg/kg	BL≤300-3σ<X	--	BL≤250-3σ<X

Note:

BL = Below Limit

OL = Over Limit

IN/X = Inconclusive (questionable, need further chemical analysis)

ii The XRF screening test for RoHS elements – The reading may be different to the actual content in the sample be of non-uniformity composition.

iii The maximum permissible limit is quoted from the RoHS directive 2011/65/EU:

RoHS Restricted Substances	Maximum Concentration Value (mg/kg) (by weight in homogenous materials)
Cadmium (Cd)	100
Lead (Pb)	1000
Mercury (Hg)	1000
Hexavalent Chromium (Cr(VI))	1000
Polybrominated biphenyls (PBBs)	1000
Polybrominated diphenylethers (PBDEs)	1000

Disclaimers:

This XRF Screening report is for reference purposes only. The applicant shall make its/his/her own judgment as to whether the information provided in this XRF screening report is sufficient for its/his/her purposes.

The result shown in this XRF screening report will differ based on various factors, including but not limited to, the sample size, thickness, area, surface flatness, equipment parameters and matrix effect (e.g. plastic, rubber, metal, glass, ceramic etc.). Further wet chemical pre-treatment with relevant chemical equipment analysis are required to obtain quantitative data.

TEST REPORT

Report No.: 2401V87266E

Date: September 03, 2024

Page 20 of 51

A.2 Wet Chemical Testing

A.2.1 PBBs & PBDEs content

Test method: IEC 62321-6:2015

Item	Unit	MDL	Result					Limit
			(32)	(44)	(57)	(118)	(340)	
Monobromobiphenyl (MonoBB)	mg/kg	50	N.D.	N.D.	N.D.	N.D.	N.D.	-
Dibromobiphenyl(DiBB)	mg/kg	50	N.D.	N.D.	N.D.	N.D.	N.D.	-
Tribromobiphenyl(TriBB)	mg/kg	50	N.D.	N.D.	N.D.	N.D.	N.D.	-
Tetrabromobiphenyl(TetraBB)	mg/kg	50	N.D.	N.D.	N.D.	N.D.	N.D.	-
Pentabromobiphenyl(PentaBB)	mg/kg	50	N.D.	N.D.	N.D.	N.D.	N.D.	-
Hexabromobiphenyl(HexaBB)	mg/kg	50	N.D.	N.D.	N.D.	N.D.	N.D.	-
Heptabromobiphenyl (HeptaBB)	mg/kg	50	N.D.	N.D.	N.D.	N.D.	N.D.	-
Octabromobiphenyl(OctaBB)	mg/kg	50	N.D.	N.D.	N.D.	N.D.	N.D.	-
Nonabromobiphenyl(NonaBB)	mg/kg	50	N.D.	N.D.	N.D.	N.D.	N.D.	-
Decabromobiphenyl(DecaBB)	mg/kg	50	N.D.	N.D.	N.D.	N.D.	N.D.	-
Monobromodiphenyl ether (MonoBDE)	mg/kg	50	N.D.	N.D.	N.D.	N.D.	N.D.	-
Dibromodiphenyl ether (DiBDE)	mg/kg	50	N.D.	N.D.	N.D.	N.D.	N.D.	-
Tribromodiphenyl ether (TriBDE)	mg/kg	50	N.D.	N.D.	N.D.	N.D.	N.D.	-
Tetrabromodiphenyl ether (TetraBDE)	mg/kg	50	N.D.	N.D.	N.D.	N.D.	N.D.	-
Pentabromodiphenyl ether (PentaBDE)	mg/kg	50	N.D.	N.D.	N.D.	N.D.	N.D.	-
Hexabromodiphenyl ether (HexaBDE)	mg/kg	50	N.D.	N.D.	N.D.	N.D.	N.D.	-
Heptabromodiphenyl ether (HeptaBDE)	mg/kg	50	N.D.	N.D.	N.D.	N.D.	N.D.	-
Octabromodiphenyl ether (OctaBDE)	mg/kg	50	N.D.	N.D.	N.D.	N.D.	N.D.	-
Nonabromodiphenyl ether (NonaBDE)	mg/kg	50	N.D.	N.D.	N.D.	N.D.	N.D.	-
Decabromodiphenyl ether (DecaBDE)	mg/kg	50	N.D.	N.D.	N.D.	N.D.	N.D.	-

TEST REPORT

Report No.: 2401V87266E

Date: September 03, 2024

Page 21 of 51

Item	Unit	MDL	Result					Limit
			(32)	(44)	(57)	(118)	(340)	
sum of MonoBDE,DiBDE,TriBDE,TetraBDE,PentaBDE,HexaBDE,HeptaBDE,OctaBDE,NonaBDE,DecaBDE	mg/kg	-	/	/	/	/	/	1000
sum of MonoBB,DiBB,TriBB,TetraBB,PentaBB,HexaBB,HeptaBB,OctaBB,NonaBB,DecaBB	mg/kg	-	/	/	/	/	/	1000
Conclusion	/	/	Pass	Pass	Pass	Pass	Pass	/

A.3 Phthalates(DBP, BBP, DEHP, DIBP)content

Test method: IEC 62321-8:2017

Item	Unit	MDL	Result						Limit
			(1)+(45)+(97)	(2)	(4)+(5)+(10)	(8)	(11)+(12)+(25)	(15)+(16)+(43)	
Dibutyl Phthalate(DBP)	mg/kg	30	N.D.	N.D.	N.D.	N.D.	N.D.	N.D.	1000
Benzyl Butyl Phthalate(BBP)	mg/kg	30	N.D.	N.D.	N.D.	N.D.	N.D.	N.D.	1000
Bis-(2-ethylhexyl) Phthalate (DEHP)	mg/kg	30	N.D.	N.D.	N.D.	N.D.	N.D.	N.D.	1000
Diisobutyl phthalate(DIBP)	mg/kg	30	N.D.	N.D.	N.D.	N.D.	N.D.	N.D.	1000
Conclusion	/	/	Pass	Pass	Pass	Pass	Pass	Pass	/

Item	Unit	MDL	Result						Limit
			(17)+(32)+(44)	(19)	(20)+(21)+(22)	(23)+(64)+(65)	(27)+(28)+(37)	(31)+(71)+(130)	
Dibutyl Phthalate(DBP)	mg/kg	30	N.D.	N.D.	N.D.	N.D.	N.D.	N.D.	1000
Benzyl Butyl Phthalate(BBP)	mg/kg	30	N.D.	N.D.	N.D.	N.D.	N.D.	N.D.	1000
Bis-(2-ethylhexyl) Phthalate (DEHP)	mg/kg	30	N.D.	N.D.	106	149	N.D.	N.D.	1000
Diisobutyl phthalate(DIBP)	mg/kg	30	N.D.	N.D.	N.D.	N.D.	N.D.	N.D.	1000
Conclusion	/	/	Pass	Pass	Pass	Pass	Pass	Pass	/

TEST REPORT

Report No.: 2401V87266E

Date: September 03, 2024

Page 22 of 51

Item	Unit	MDL	Result						Limit
			(34)+(51)+(74)	(38)+(40)+(60)	(42)+(56)+(77)	(47)+(82)+(84)	(48)+(57)+(118)	(50)+(54)+(210)	
Dibutyl Phthalate(DBP)	mg/kg	30	N.D.	N.D.	N.D.	N.D.	N.D.	N.D.	1000
Benzyl Butyl Phthalate(BBP)	mg/kg	30	N.D.	N.D.	N.D.	N.D.	N.D.	N.D.	1000
Bis-(2-ethylhexyl) Phthalate (DEHP)	mg/kg	30	N.D.	N.D.	N.D.	N.D.	N.D.	N.D.	1000
Diisobutyl phthalate(DIBP)	mg/kg	30	N.D.	N.D.	N.D.	N.D.	N.D.	N.D.	1000
Conclusion	/	/	Pass	Pass	Pass	Pass	Pass	Pass	/

Item	Unit	MDL	Result						Limit
			(52)+(53)+(139)	(55)+(143)+(146)	(66)+(67)+(68)	(69)+(70)+(101)	(73)+(78)+(80)	(75)+(144)+(202)	
Dibutyl Phthalate(DBP)	mg/kg	30	N.D.	N.D.	N.D.	N.D.	N.D.	N.D.	1000
Benzyl Butyl Phthalate(BBP)	mg/kg	30	N.D.	N.D.	N.D.	N.D.	N.D.	N.D.	1000
Bis-(2-ethylhexyl) Phthalate (DEHP)	mg/kg	30	N.D.	N.D.	N.D.	N.D.	N.D.	N.D.	1000
Diisobutyl phthalate(DIBP)	mg/kg	30	N.D.	N.D.	N.D.	N.D.	N.D.	N.D.	1000
Conclusion	/	/	Pass	Pass	Pass	Pass	Pass	Pass	/

Item	Unit	MDL	Result						Limit
			(83)+(158)+(159)	(85)+(87)+(94)	(86)+(88)+(89)	(90)+(92)+(93)	(99)+(102)+(104)	(108)+(109)+(110)	
Dibutyl Phthalate(DBP)	mg/kg	30	N.D.	N.D.	N.D.	N.D.	N.D.	N.D.	1000
Benzyl Butyl Phthalate(BBP)	mg/kg	30	N.D.	N.D.	N.D.	N.D.	N.D.	N.D.	1000
Bis-(2-ethylhexyl) Phthalate (DEHP)	mg/kg	30	N.D.	N.D.	N.D.	N.D.	N.D.	N.D.	1000
Diisobutyl phthalate(DIBP)	mg/kg	30	N.D.	N.D.	N.D.	N.D.	N.D.	N.D.	1000
Conclusion	/	/	Pass	Pass	Pass	Pass	Pass	Pass	/

Item	Unit	MDL	Result						Limit
			(111)+(112)+(113)	(114)+(115)+(116)	(117)+(148)+(149)	(121)+(124)+(128)	(129)+(133)+(155)	(131)+(135)	
Dibutyl Phthalate(DBP)	mg/kg	30	N.D.	N.D.	N.D.	N.D.	N.D.	N.D.	1000
Benzyl Butyl Phthalate(BBP)	mg/kg	30	N.D.	N.D.	N.D.	N.D.	N.D.	N.D.	1000
Bis-(2-ethylhexyl) Phthalate (DEHP)	mg/kg	30	N.D.	N.D.	N.D.	N.D.	N.D.	N.D.	1000
Diisobutyl phthalate(DIBP)	mg/kg	30	N.D.	N.D.	N.D.	N.D.	N.D.	N.D.	1000
Conclusion	/	/	Pass	Pass	Pass	Pass	Pass	Pass	/

Bay Area Compliance Laboratories Corp. (Shenzhen)

5/F. (B-West), 6&7/F., The 3rd Phase of Wanli Industrial Building D, Shihua Road, Fubao Community, Fubao Subdistrict, Futian District, Shenzhen, Guangdong, China

QB-CH-R001 (V1.0)

Tel: +86-755-33320018 Fax: +86-755-33320008

TEST REPORT

Report No.: 2401V87266E

Date: September 03, 2024

Page 23 of 51

Item	Unit	MDL	Result						Limit
			(132)+(164) +(165)	(134)+(184) +(396)	(136)+(138) +(147)	(137)+(153) +(167)	(145)+(226) +(247)	(150)+(151) +(166)	
Dibutyl Phthalate(DBP)	mg/kg	30	N.D.	N.D.	N.D.	N.D.	N.D.	N.D.	1000
Benzyl Butyl Phthalate(BBP)	mg/kg	30	N.D.	N.D.	N.D.	N.D.	N.D.	N.D.	1000
Bis-(2-ethylhexyl) Phthalate (DEHP)	mg/kg	30	N.D.	N.D.	N.D.	N.D.	N.D.	N.D.	1000
Diisobutyl phthalate(DIBP)	mg/kg	30	N.D.	N.D.	N.D.	N.D.	N.D.	N.D.	1000
Conclusion	/	/	Pass	Pass	Pass	Pass	Pass	Pass	/

Item	Unit	MDL	Result						Limit
			(152)+(163) +(179)	(161)+(162) +(180)	(172)+(421) +(433)	(173)+(177) +(221)	(174)+(175) +(176)	(185)+(186) +(198)	
Dibutyl Phthalate(DBP)	mg/kg	30	N.D.	N.D.	N.D.	N.D.	N.D.	N.D.	1000
Benzyl Butyl Phthalate(BBP)	mg/kg	30	N.D.	N.D.	N.D.	N.D.	N.D.	N.D.	1000
Bis-(2-ethylhexyl) Phthalate (DEHP)	mg/kg	30	N.D.	N.D.	N.D.	N.D.	N.D.	40	1000
Diisobutyl phthalate(DIBP)	mg/kg	30	N.D.	N.D.	N.D.	N.D.	N.D.	N.D.	1000
Conclusion	/	/	Pass	Pass	Pass	Pass	Pass	Pass	/

Item	Unit	MDL	Result						Limit
			(191)+(193) +(204)	(199)+(274) +(275)	(206)+(211) +(212)	(214)+(215) +(216)	(219)+(220) +(227)	(222)+(243) +(244)	
Dibutyl Phthalate(DBP)	mg/kg	30	N.D.	N.D.	N.D.	N.D.	N.D.	N.D.	1000
Benzyl Butyl Phthalate(BBP)	mg/kg	30	N.D.	N.D.	N.D.	N.D.	N.D.	N.D.	1000
Bis-(2-ethylhexyl) Phthalate (DEHP)	mg/kg	30	N.D.	N.D.	N.D.	N.D.	N.D.	N.D.	1000
Diisobutyl phthalate(DIBP)	mg/kg	30	N.D.	N.D.	N.D.	N.D.	N.D.	N.D.	1000
Conclusion	/	/	Pass	Pass	Pass	Pass	Pass	Pass	/

Item	Unit	MDL	Result						Limit
			(223)+(245) +(269)	(225)+(246) +(271)	(229)+(250) +(263)	(234)+(235) +(236)	(237)+(238) +(239)	(240)+(242) +(249)	
Dibutyl Phthalate(DBP)	mg/kg	30	N.D.	N.D.	N.D.	N.D.	N.D.	N.D.	1000
Benzyl Butyl Phthalate(BBP)	mg/kg	30	N.D.	N.D.	N.D.	N.D.	N.D.	N.D.	1000
Bis-(2-ethylhexyl) Phthalate (DEHP)	mg/kg	30	N.D.	N.D.	N.D.	N.D.	N.D.	N.D.	1000
Diisobutyl phthalate(DIBP)	mg/kg	30	N.D.	N.D.	N.D.	N.D.	N.D.	N.D.	1000
Conclusion	/	/	Pass	Pass	Pass	Pass	Pass	Pass	/

Bay Area Compliance Laboratories Corp. (Shenzhen)

5/F. (B-West), 6&7/F., The 3rd Phase of Wanli Industrial Building D, Shihua Road, Fubao Community, Fubao Subdistrict, Futian District, Shenzhen, Guangdong, China

QB-CH-R001 (V1.0)

Tel: +86-755-33320018 Fax: +86-755-33320008

TEST REPORT

Report No.: 2401V87266E

Date: September 03, 2024

Page 24 of 51

Item	Unit	MDL	Result						Limit
			(251)+(252) +(253)	(254)+(255) +(256)	(257)+(258) +(260)	(261)+(262) +(267)	(264)+(265) +(266)	(268)+(296) +(334)	
Dibutyl Phthalate(DBP)	mg/kg	30	N.D.	N.D.	N.D.	N.D.	N.D.	N.D.	1000
Benzyl Butyl Phthalate(BBP)	mg/kg	30	N.D.	N.D.	N.D.	N.D.	N.D.	N.D.	1000
Bis-(2-ethylhexyl) Phthalate (DEHP)	mg/kg	30	N.D.	N.D.	N.D.	N.D.	N.D.	N.D.	1000
Diisobutyl phthalate(DIBP)	mg/kg	30	N.D.	N.D.	N.D.	N.D.	N.D.	N.D.	1000
Conclusion	/	/	Pass	Pass	Pass	Pass	Pass	Pass	/

Item	Unit	MDL	Result						Limit
			(273)+(277) +(286)	(278)+(281) +(294)	(279)+(343) +(348)	(284)+(292) +(304)	(285)+(340) +(391)	(290)+(306) +(347)	
Dibutyl Phthalate(DBP)	mg/kg	30	N.D.	N.D.	N.D.	N.D.	N.D.	N.D.	1000
Benzyl Butyl Phthalate(BBP)	mg/kg	30	N.D.	N.D.	N.D.	N.D.	N.D.	N.D.	1000
Bis-(2-ethylhexyl) Phthalate (DEHP)	mg/kg	30	N.D.	N.D.	N.D.	N.D.	N.D.	N.D.	1000
Diisobutyl phthalate(DIBP)	mg/kg	30	N.D.	N.D.	N.D.	N.D.	N.D.	N.D.	1000
Conclusion	/	/	Pass	Pass	Pass	Pass	Pass	Pass	/

Item	Unit	MDL	Result						Limit
			(295)+(370)	(297)+(310) +(400)	(299)+(302) +(309)	(313)+(315) +(319)	(317)	(322)+(325) +(328)	
Dibutyl Phthalate(DBP)	mg/kg	30	N.D.	N.D.	N.D.	N.D.	N.D.	N.D.	1000
Benzyl Butyl Phthalate(BBP)	mg/kg	30	N.D.	N.D.	N.D.	N.D.	N.D.	N.D.	1000
Bis-(2-ethylhexyl) Phthalate (DEHP)	mg/kg	30	N.D.	N.D.	N.D.	N.D.	N.D.	N.D.	1000
Diisobutyl phthalate(DIBP)	mg/kg	30	N.D.	N.D.	N.D.	N.D.	N.D.	N.D.	1000
Conclusion	/	/	Pass	Pass	Pass	Pass	Pass	Pass	/

Item	Unit	MDL	Result						Limit
			(329)+(332) +(355)	(335)+(336) +(337)	(338)+(339) +(371)	(344)+(346)	(357)+(359) +(361)	(364)+(368) +(402)	
Dibutyl Phthalate(DBP)	mg/kg	30	N.D.	N.D.	N.D.	N.D.	N.D.	N.D.	1000
Benzyl Butyl Phthalate(BBP)	mg/kg	30	N.D.	N.D.	N.D.	N.D.	N.D.	N.D.	1000
Bis-(2-ethylhexyl) Phthalate (DEHP)	mg/kg	30	N.D.	N.D.	N.D.	N.D.	N.D.	N.D.	1000
Diisobutyl phthalate(DIBP)	mg/kg	30	N.D.	N.D.	N.D.	N.D.	N.D.	N.D.	1000
Conclusion	/	/	Pass	Pass	Pass	Pass	Pass	Pass	/

Bay Area Compliance Laboratories Corp. (Shenzhen)

5/F. (B-West), 6&7/F., The 3rd Phase of Wanli Industrial Building D, Shihua Road, Fubao Community, Fubao Subdistrict, Futian District, Shenzhen, Guangdong, China

QB-CH-R001 (V1.0)

Tel: +86-755-33320018 Fax: +86-755-33320008

TEST REPORT

Report No.: 2401V87266E

Date: September 03, 2024

Page 25 of 51

Item	Unit	MDL	Result						Limit
			(372)+(373) +(374)	(375)+(376) +(377)	(378)+(379) +(380)	(381)+(382) +(383)	(384)+(385) +(386)	(387)+(388) +(397)	
Dibutyl Phthalate(DBP)	mg/kg	30	N.D.	N.D.	N.D.	N.D.	N.D.	N.D.	1000
Benzyl Butyl Phthalate(BBP)	mg/kg	30	N.D.	N.D.	N.D.	N.D.	N.D.	N.D.	1000
Bis-(2-ethylhexyl) Phthalate (DEHP)	mg/kg	30	N.D.	N.D.	N.D.	N.D.	N.D.	N.D.	1000
Diisobutyl phthalate(DIBP)	mg/kg	30	N.D.	N.D.	N.D.	N.D.	N.D.	N.D.	1000
Conclusion	/	/	Pass	Pass	Pass	Pass	Pass	Pass	/

Item	Unit	MDL	Result						Limit
			(393)+(394) +(405)	(395)+(404) +(406)	(398)+(399) +(414)	(408)+(409) +(410)	(411)+(412) +(413)	(415)+(426)	
Dibutyl Phthalate(DBP)	mg/kg	30	N.D.	N.D.	N.D.	N.D.	N.D.	N.D.	1000
Benzyl Butyl Phthalate(BBP)	mg/kg	30	N.D.	N.D.	N.D.	N.D.	N.D.	N.D.	1000
Bis-(2-ethylhexyl) Phthalate (DEHP)	mg/kg	30	N.D.	N.D.	N.D.	N.D.	N.D.	N.D.	1000
Diisobutyl phthalate(DIBP)	mg/kg	30	N.D.	N.D.	N.D.	N.D.	N.D.	N.D.	1000
Conclusion	/	/	Pass	Pass	Pass	Pass	Pass	Pass	/

Item	Unit	MDL	Result					Limit
			(416)+(419)+ (422)	(417)+(429)+ (430)	(418)	(420)	(423)+(424)+ (425)	
Dibutyl Phthalate(DBP)	mg/kg	30	N.D.	N.D.	N.D.	N.D.	N.D.	1000
Benzyl Butyl Phthalate(BBP)	mg/kg	30	N.D.	N.D.	N.D.	N.D.	N.D.	1000
Bis-(2-ethylhexyl) Phthalate (DEHP)	mg/kg	30	N.D.	N.D.	N.D.	44	N.D.	1000
Diisobutyl phthalate(DIBP)	mg/kg	30	N.D.	N.D.	N.D.	N.D.	N.D.	1000
Conclusion	/	/	Pass	Pass	Pass	Pass	Pass	/

Note:

- N.D.= Not Detected or less than MDL
- MDL = Method Detection Limit
- "+" = Composite testing.
- The Result less than MDL are not taken into account while calculating the sum contents.

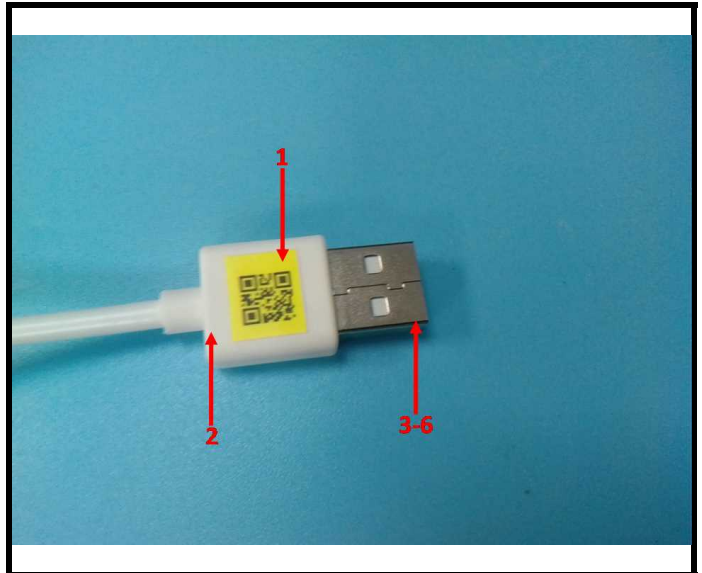
TEST REPORT

Report No.: 2401V87266E

Date: September 03, 2024

Page 26 of 51

Photograph of Sample

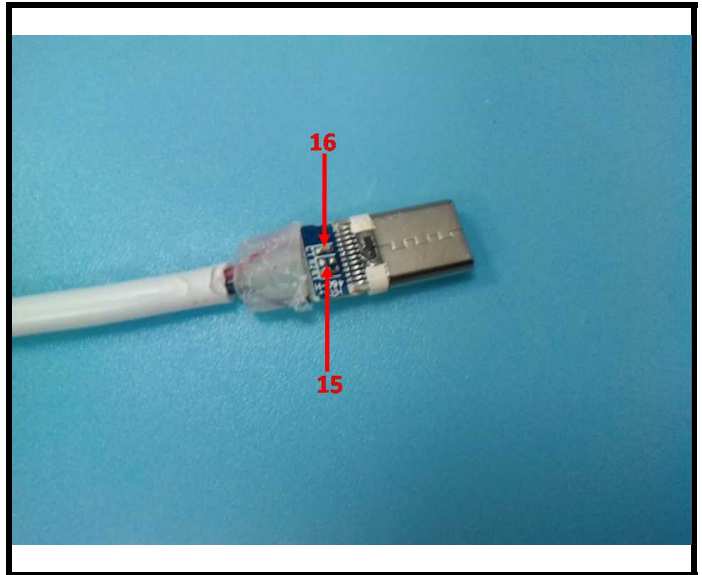
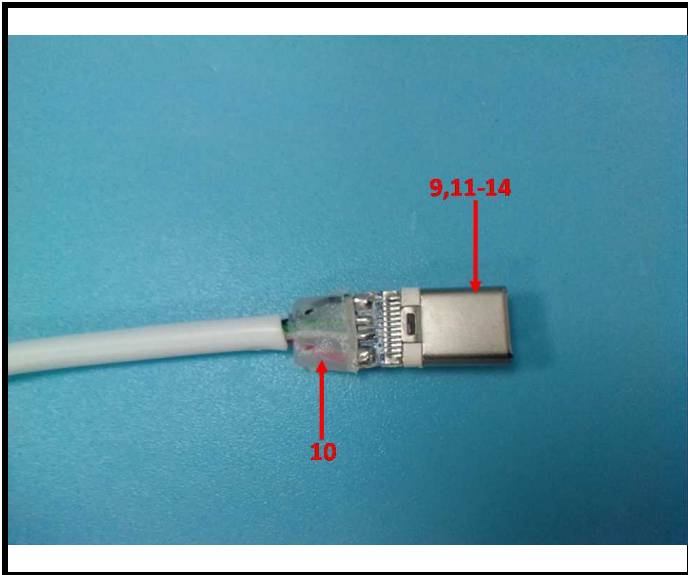
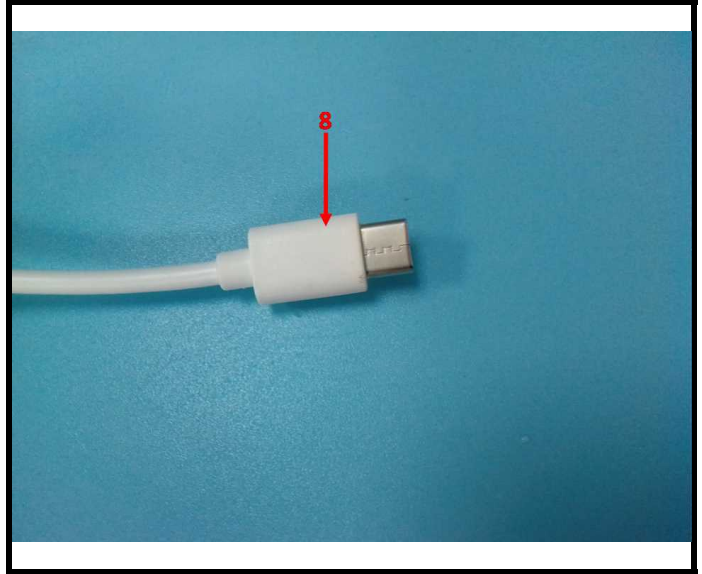
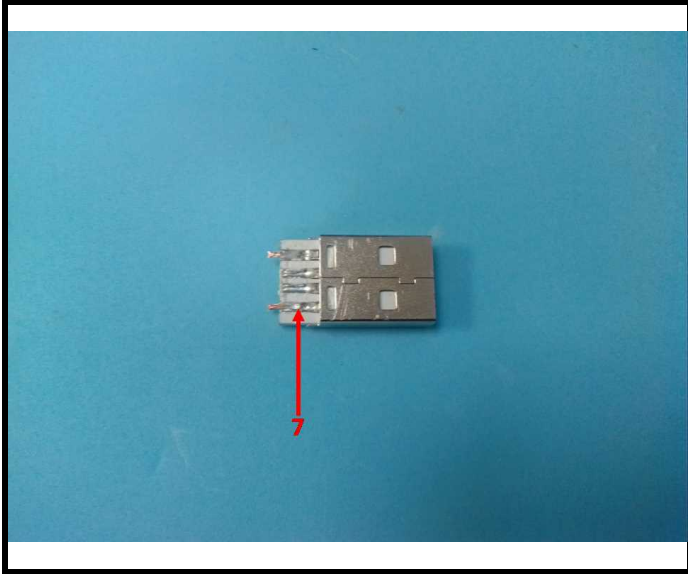


TEST REPORT

Report No.: 2401V87266E

Date: September 03, 2024

Page 27 of 51

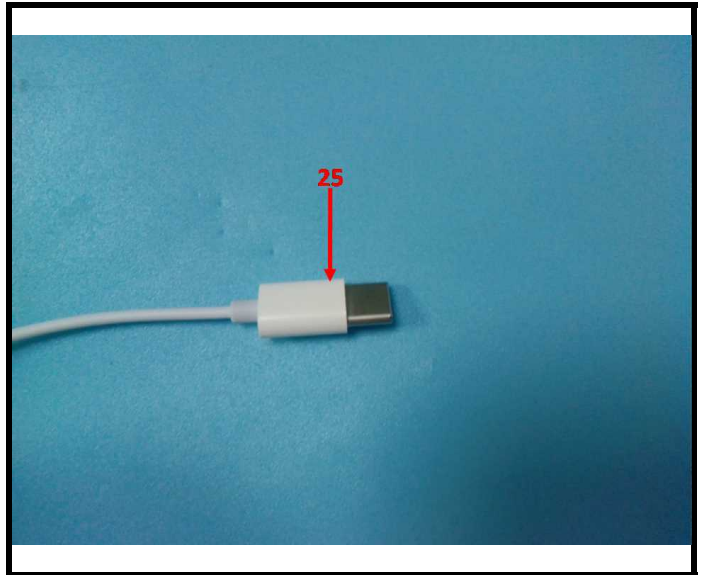
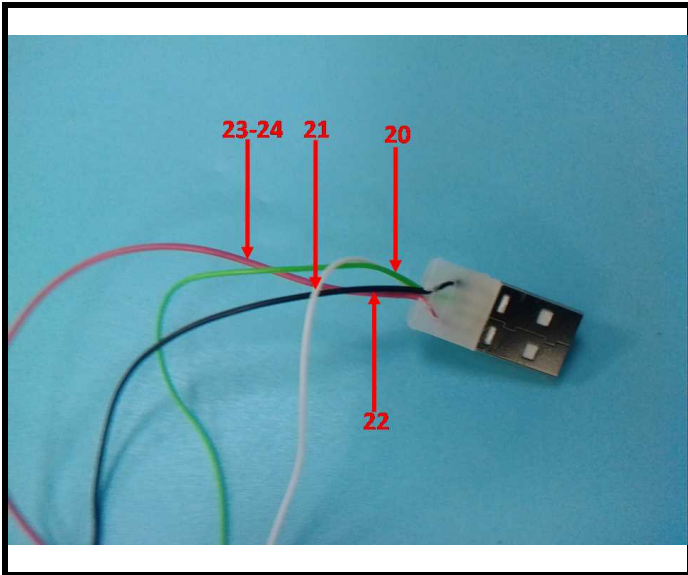
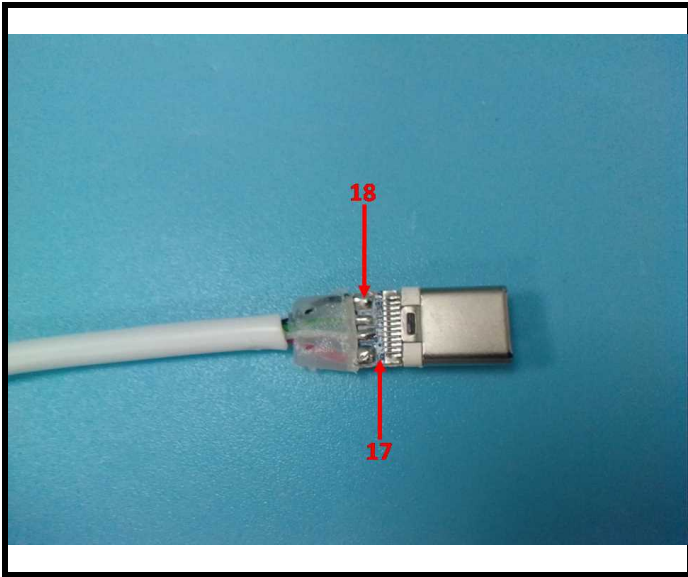


TEST REPORT

Report No.: 2401V87266E

Date: September 03, 2024

Page 28 of 51

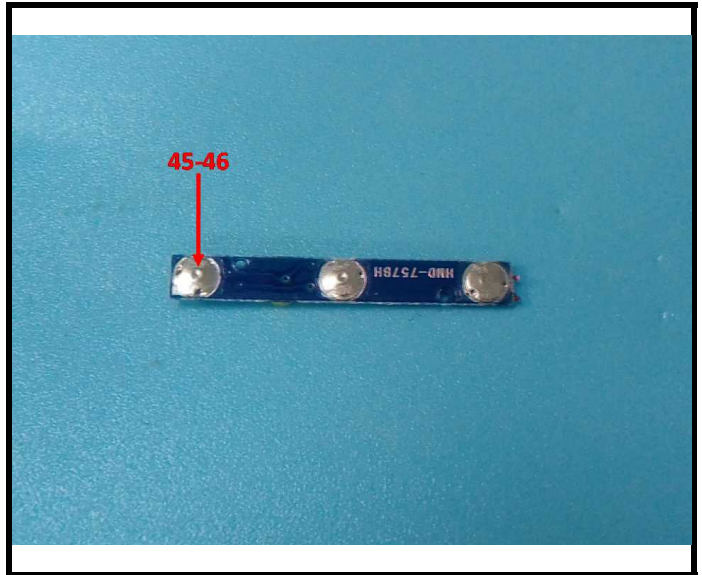
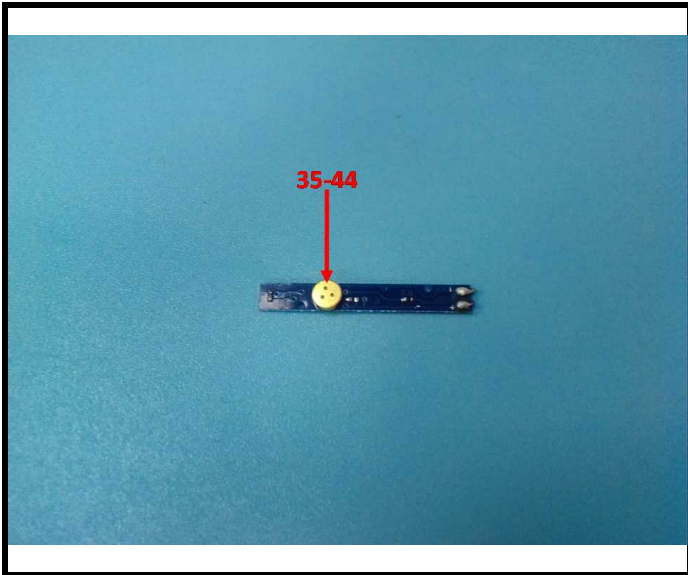
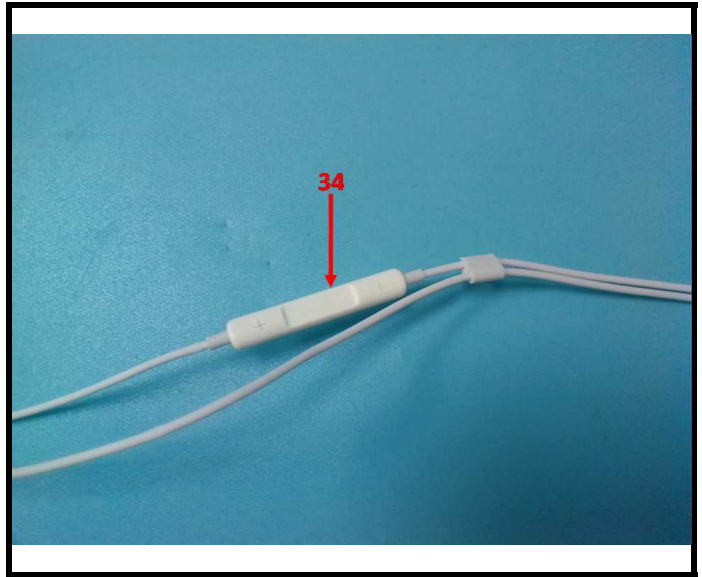
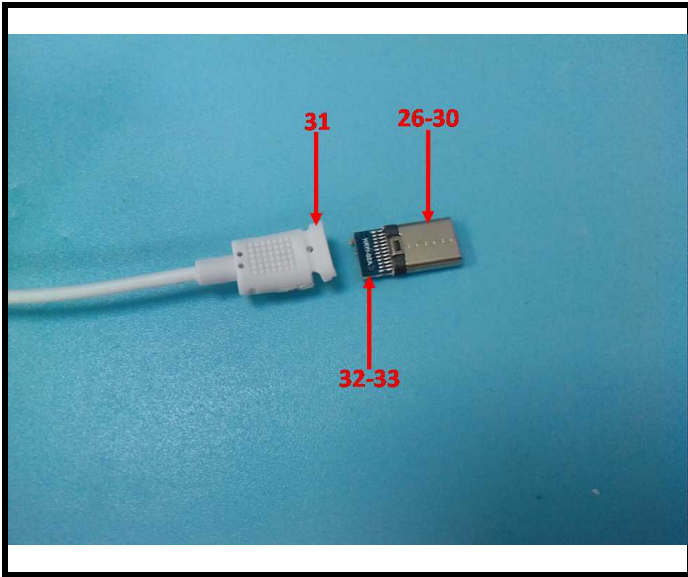


TEST REPORT

Report No.: 2401V87266E

Date: September 03, 2024

Page 29 of 51

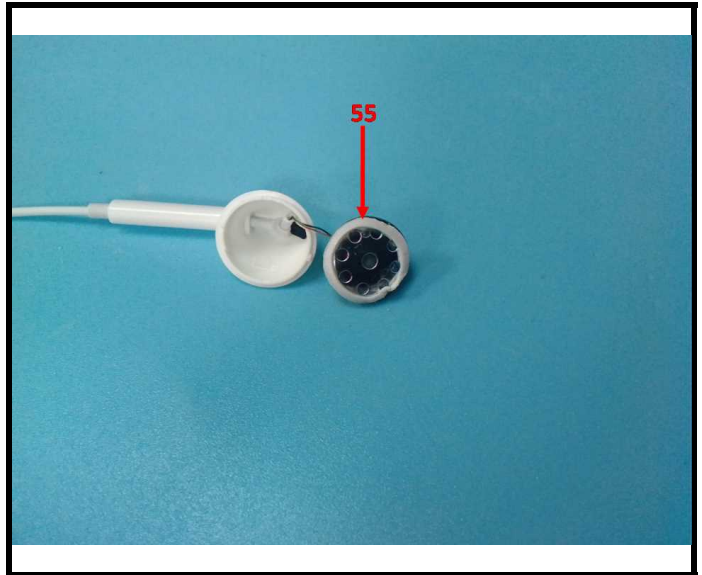
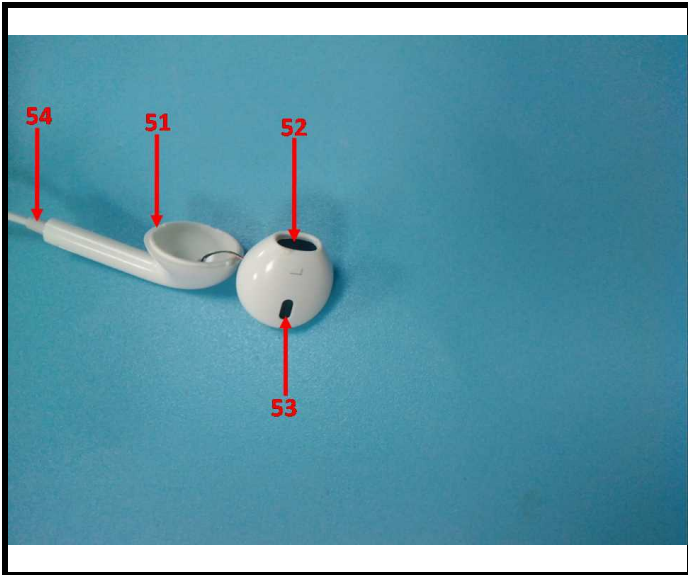
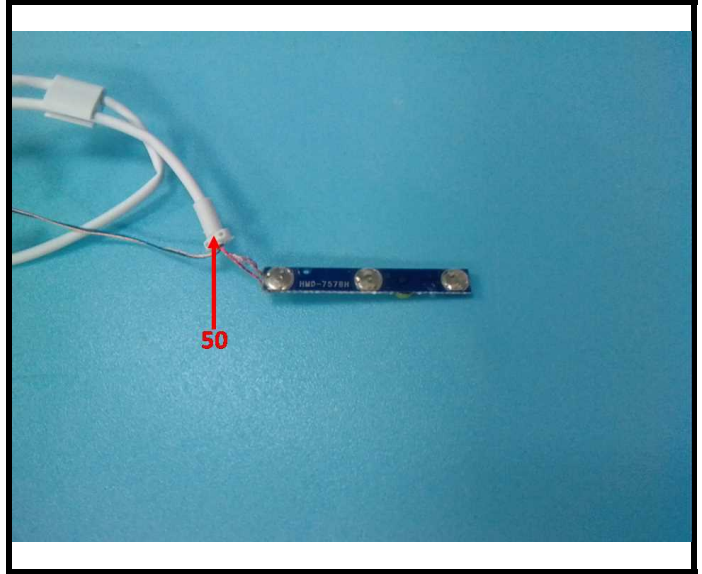
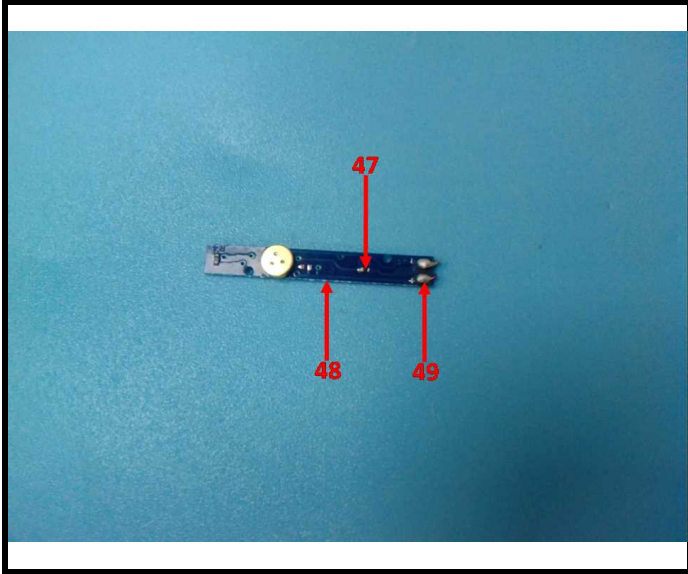


TEST REPORT

Report No.: 2401V87266E

Date: September 03, 2024

Page 30 of 51

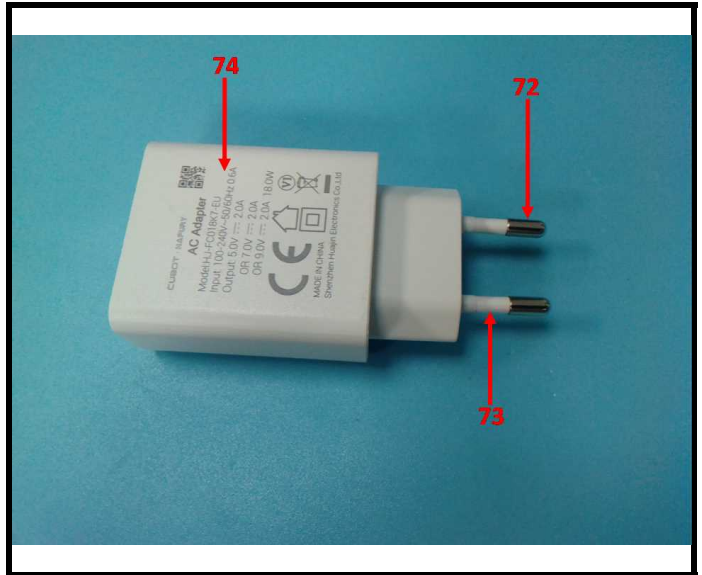
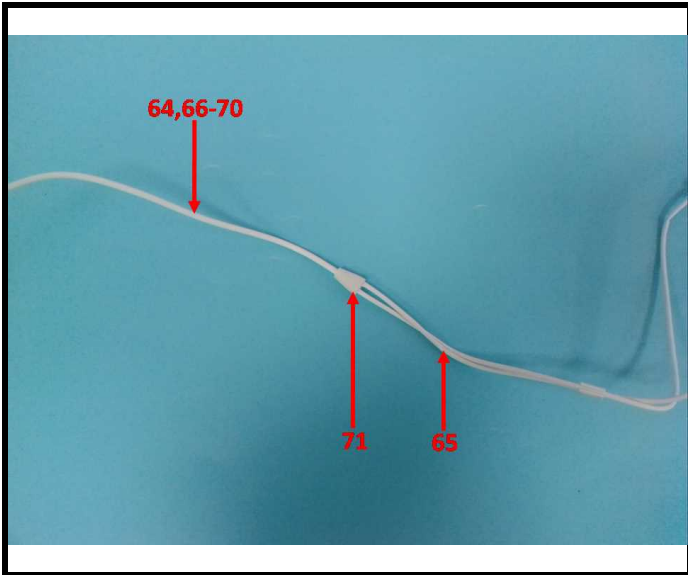
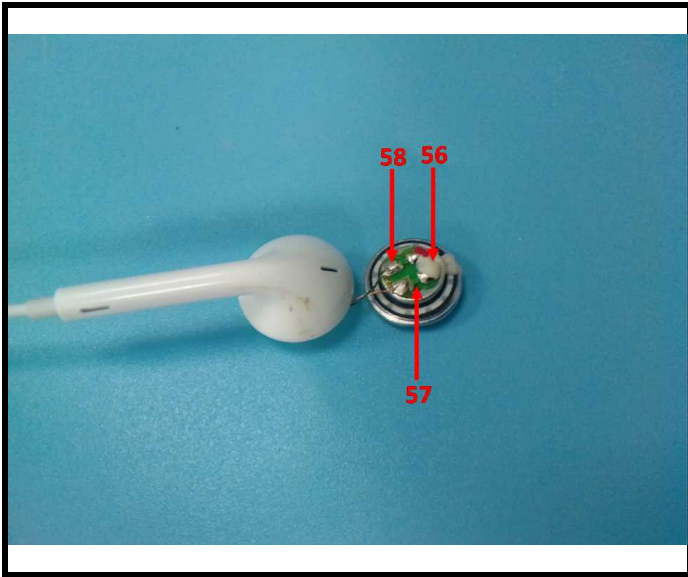


TEST REPORT

Report No.: 2401V87266E

Date: September 03, 2024

Page 31 of 51

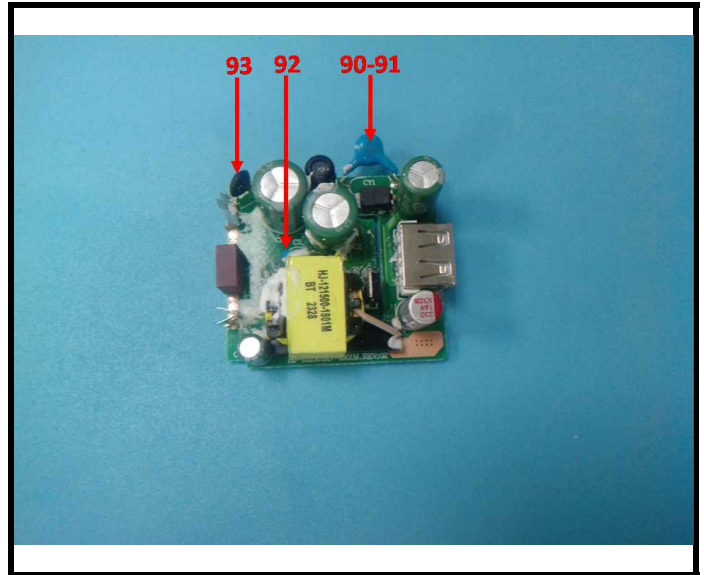
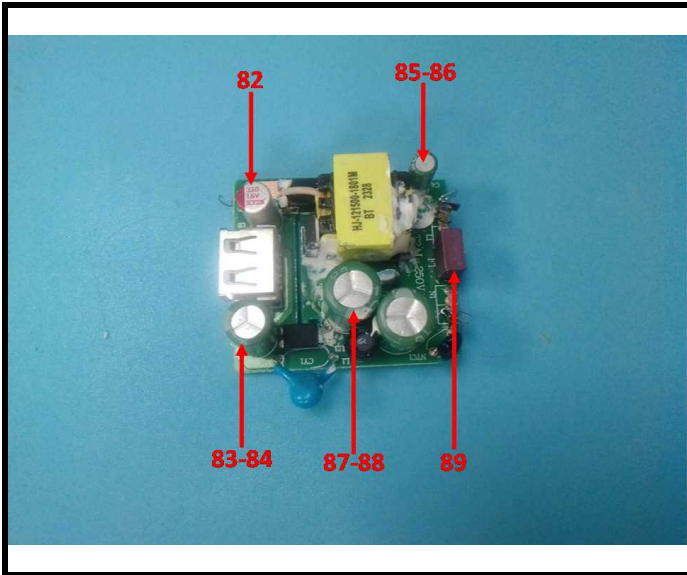
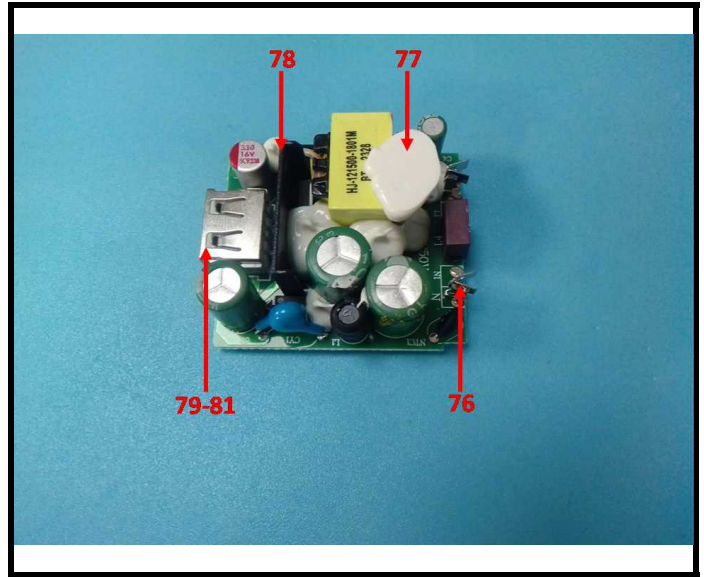
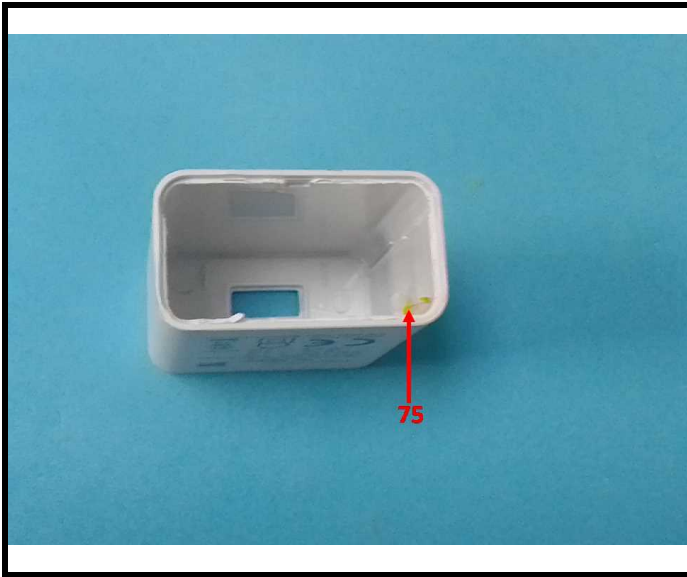


TEST REPORT

Report No.: 2401V87266E

Date: September 03, 2024

Page 32 of 51

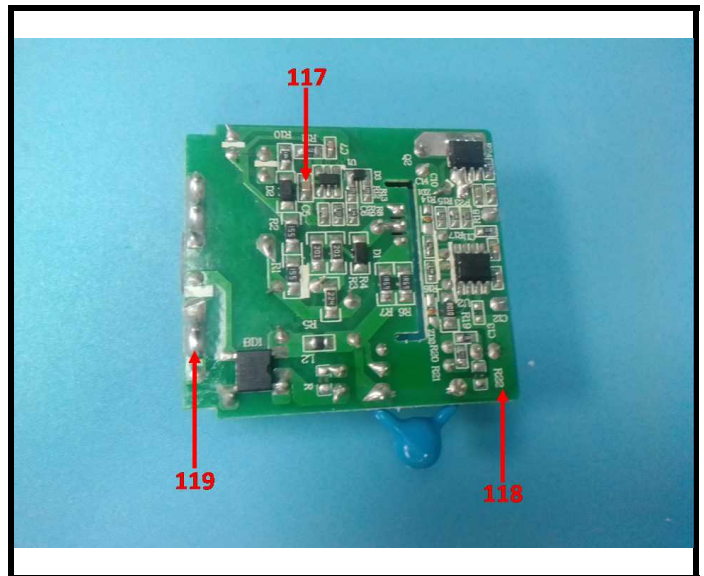
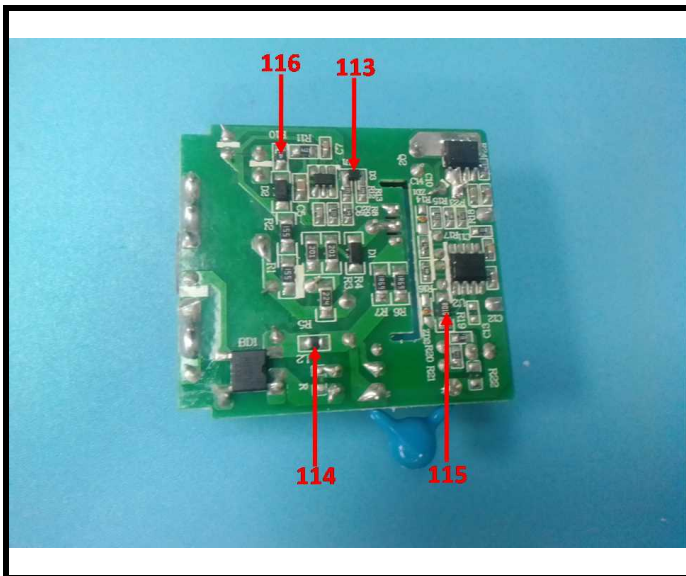
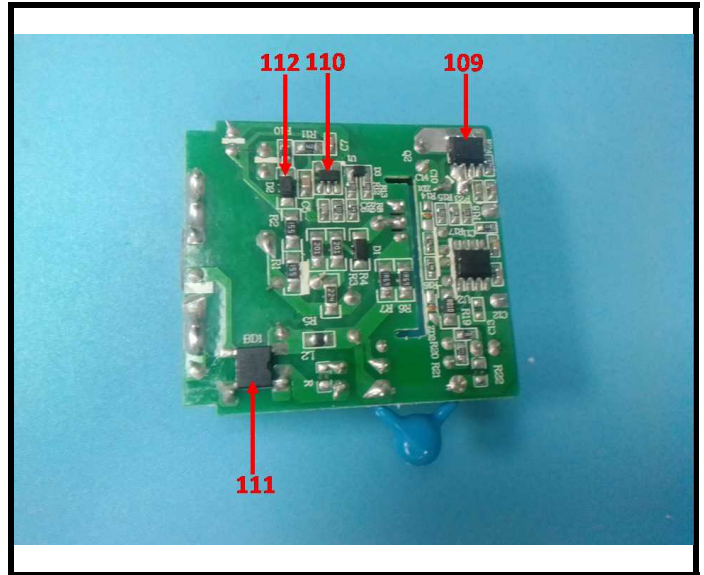
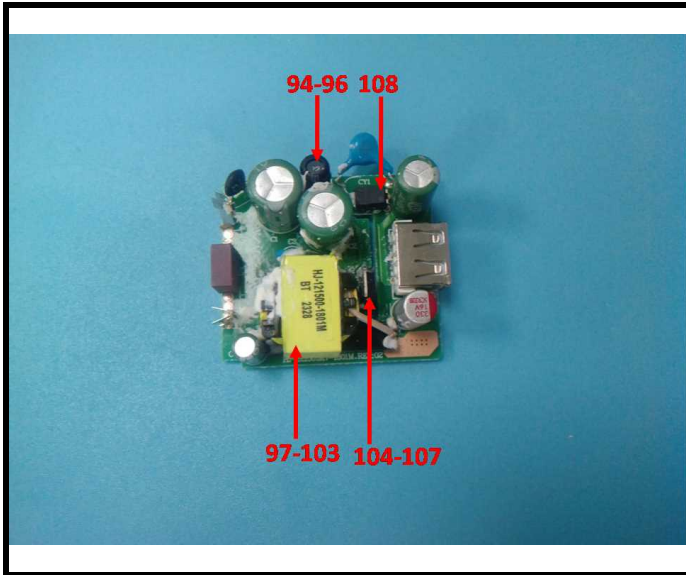


TEST REPORT

Report No.: 2401V87266E

Date: September 03, 2024

Page 33 of 51

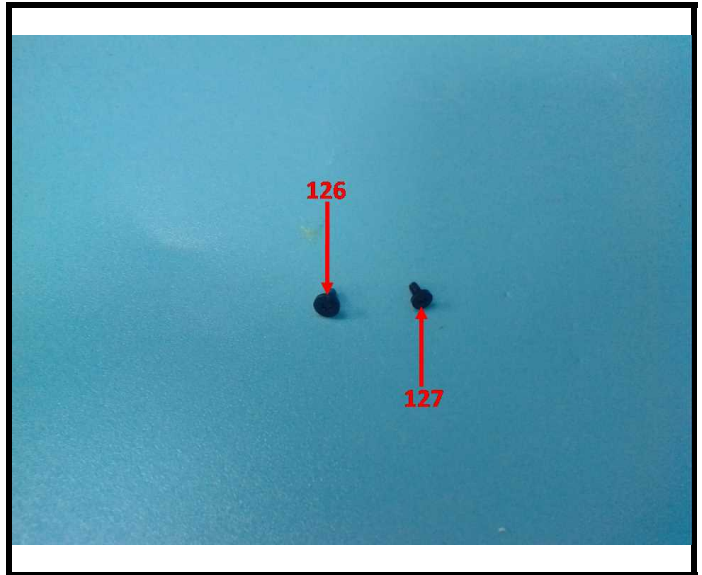
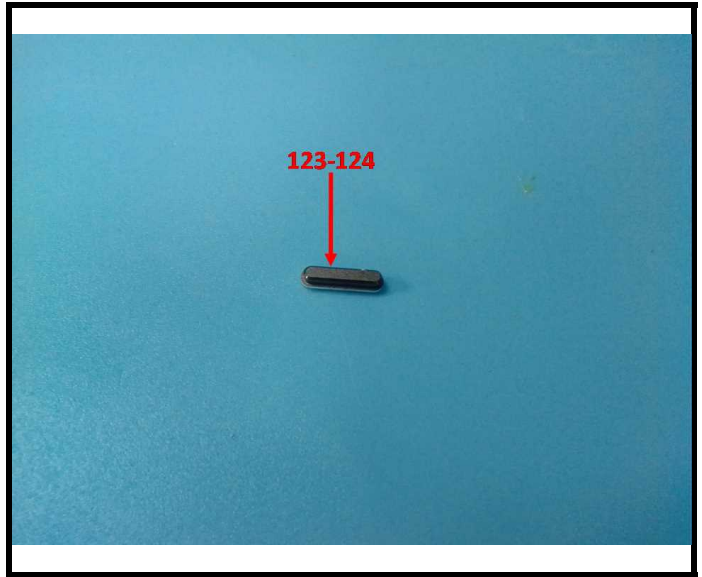
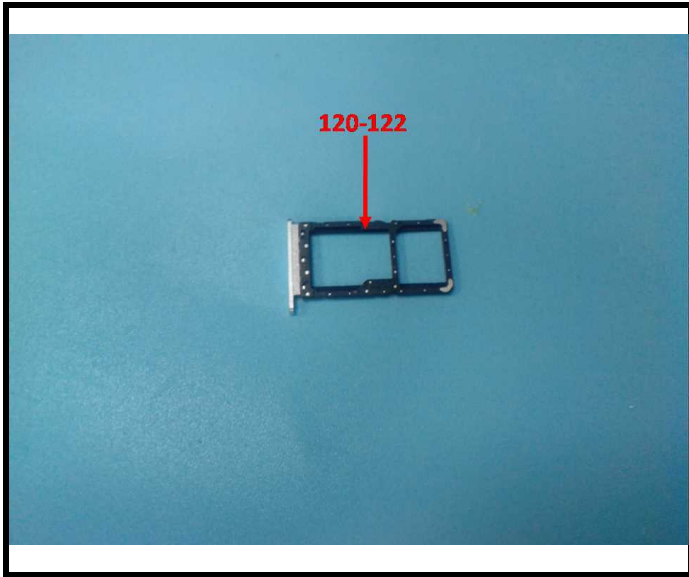


TEST REPORT

Report No.: 2401V87266E

Date: September 03, 2024

Page 34 of 51

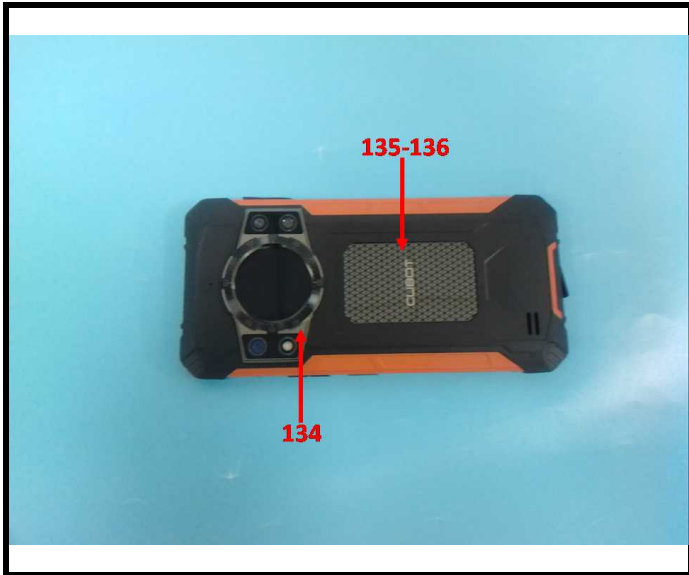
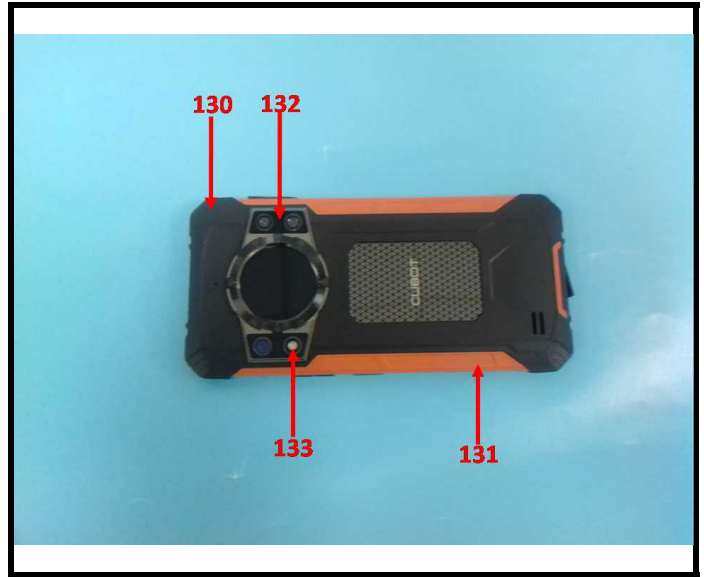
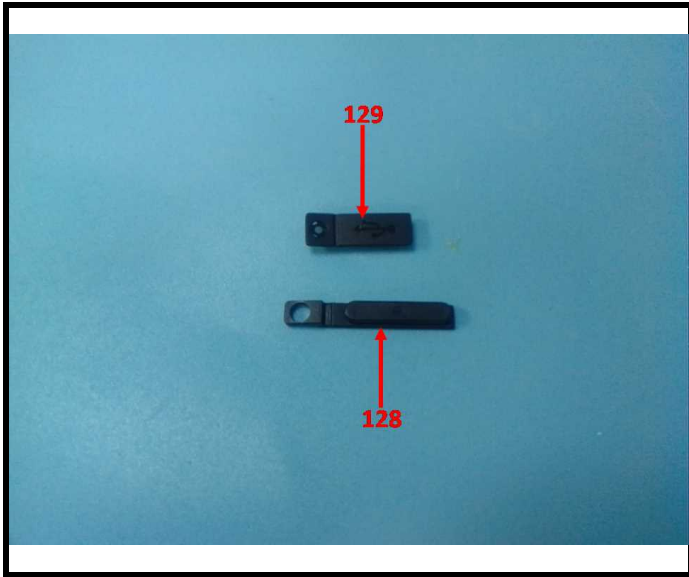


TEST REPORT

Report No.: 2401V87266E

Date: September 03, 2024

Page 35 of 51

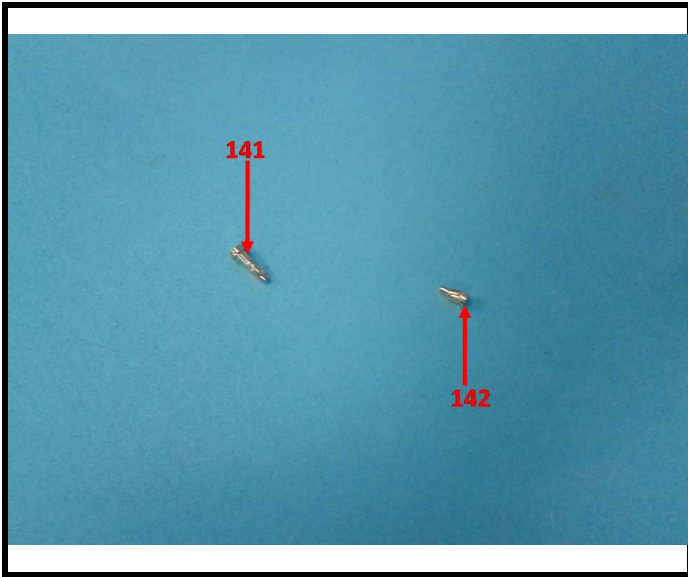


TEST REPORT

Report No.: 2401V87266E

Date: September 03, 2024

Page 36 of 51

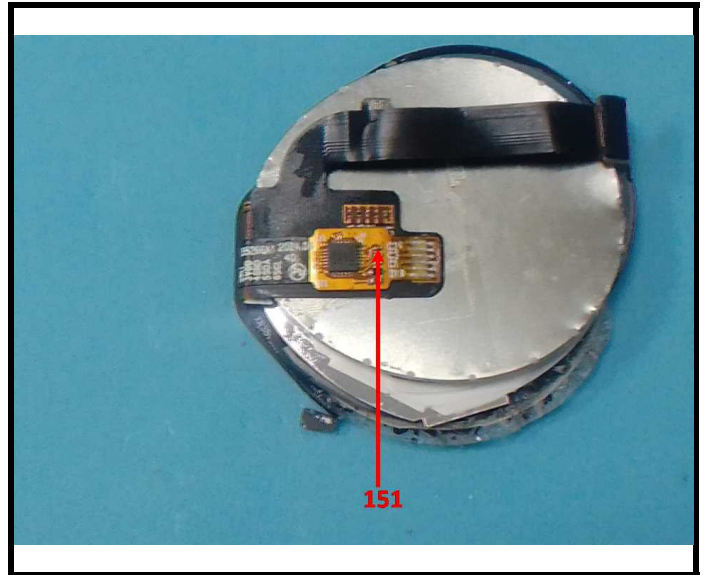
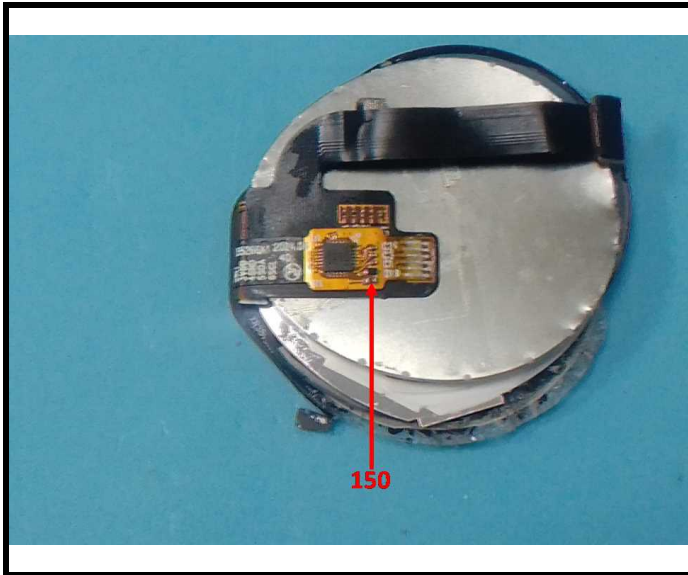
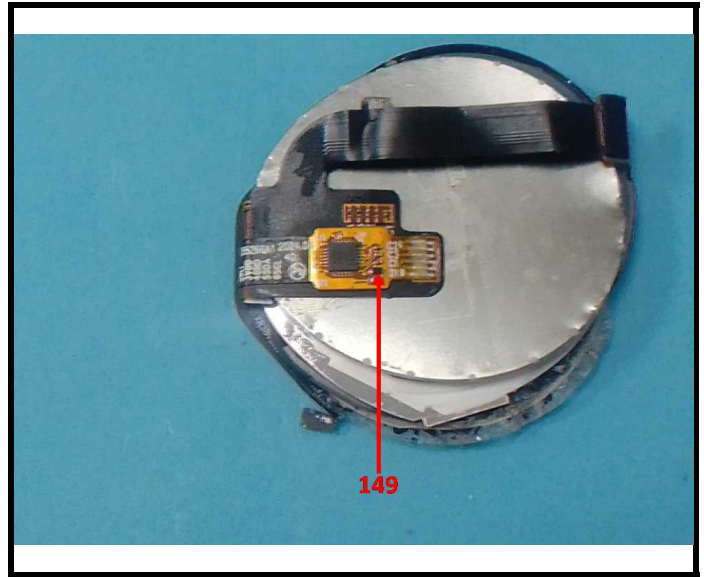
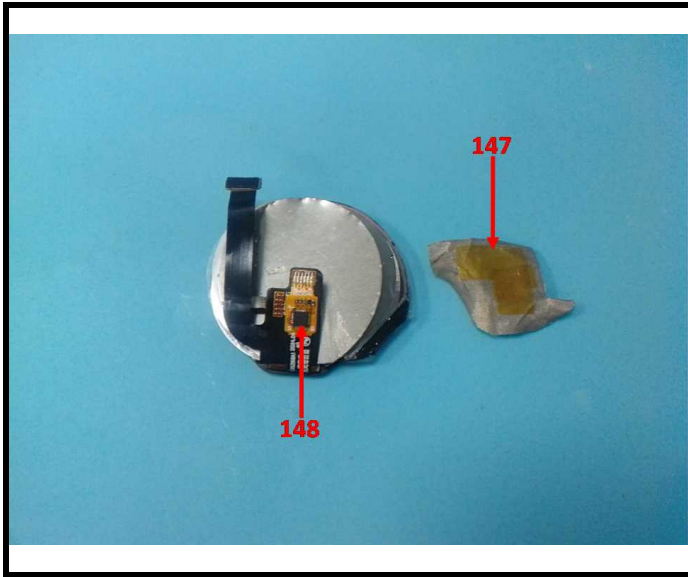


TEST REPORT

Report No.: 2401V87266E

Date: September 03, 2024

Page 37 of 51

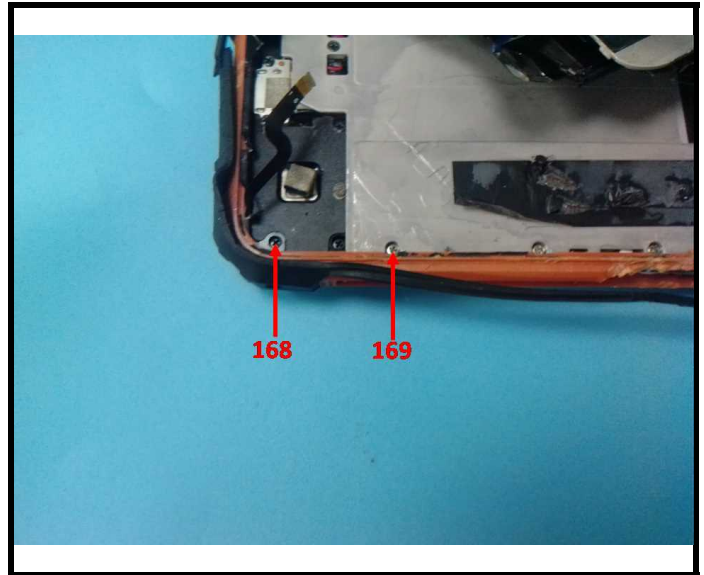
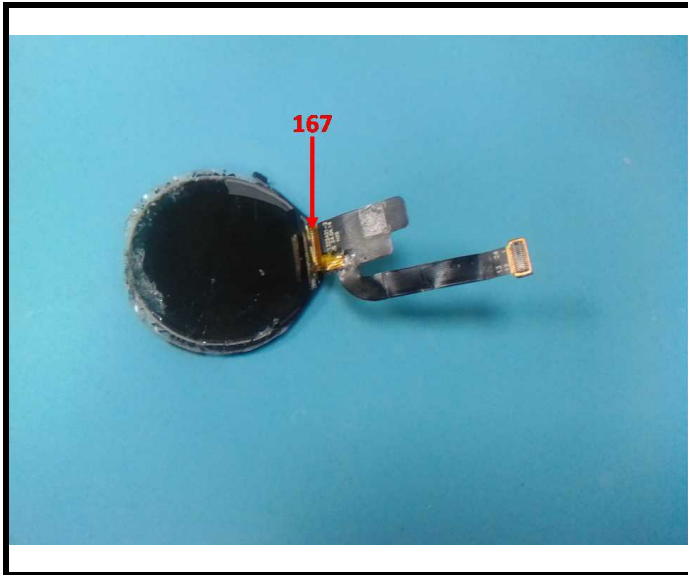
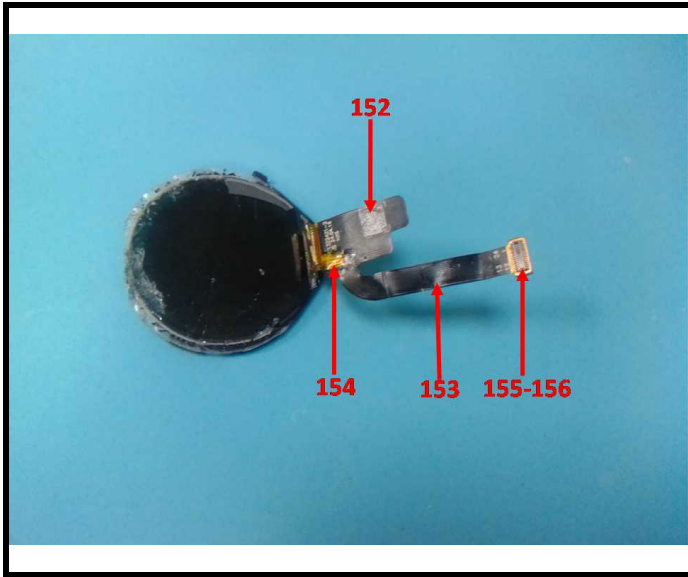


TEST REPORT

Report No.: 2401V87266E

Date: September 03, 2024

Page 38 of 51

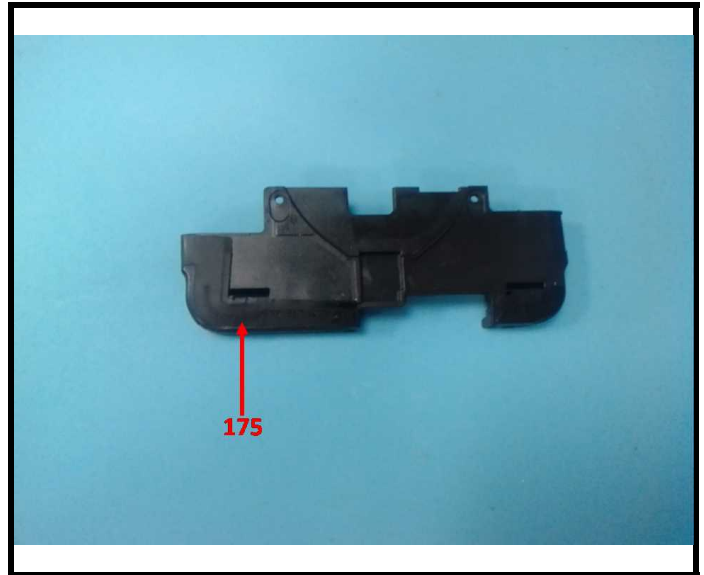
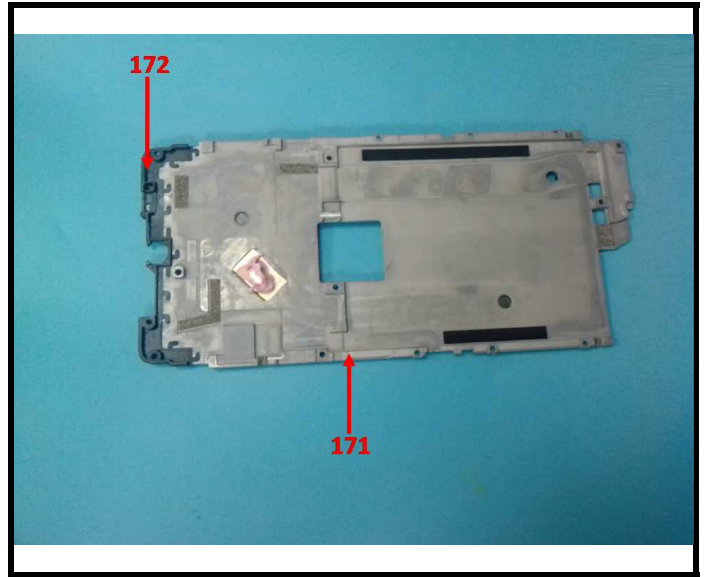
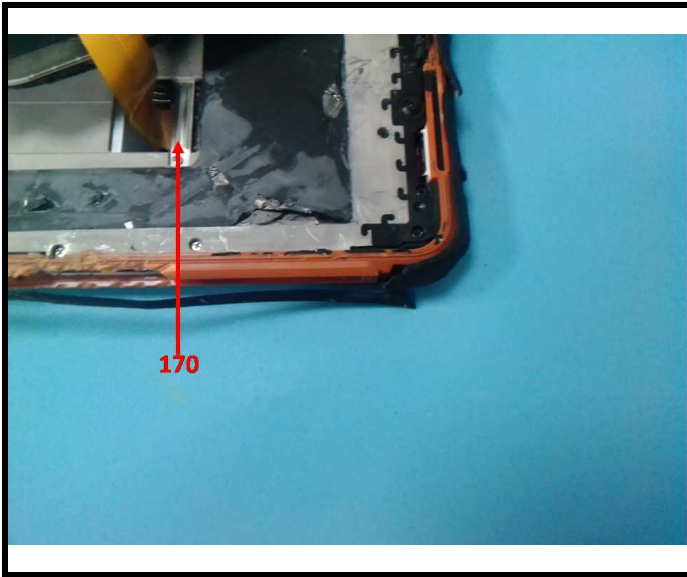


TEST REPORT

Report No.: 2401V87266E

Date: September 03, 2024

Page 39 of 51

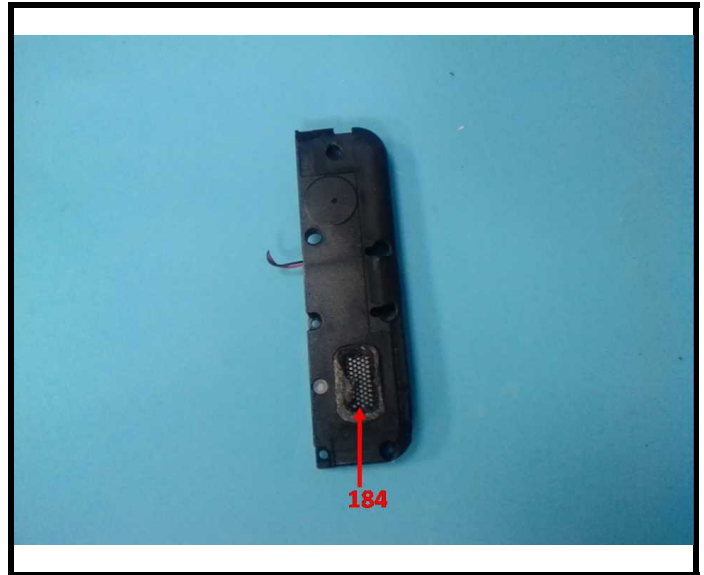
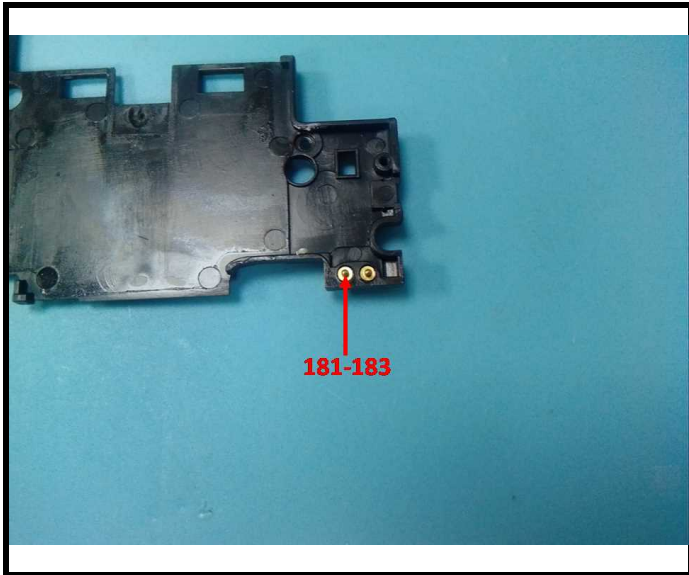
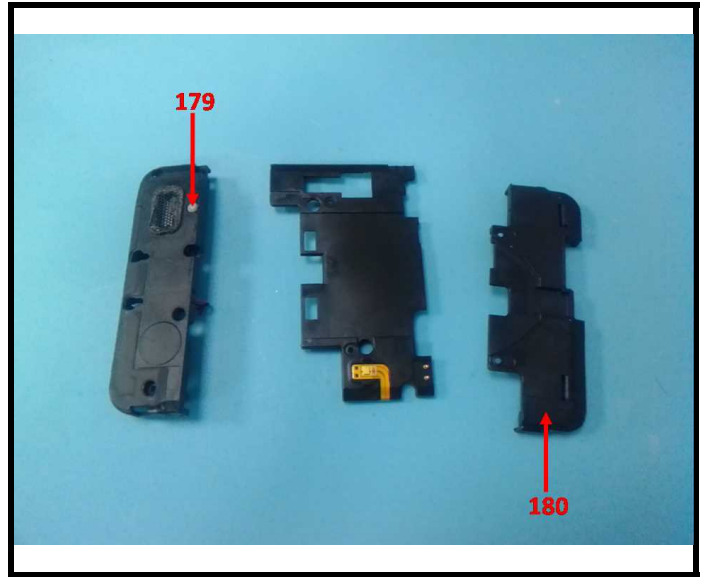
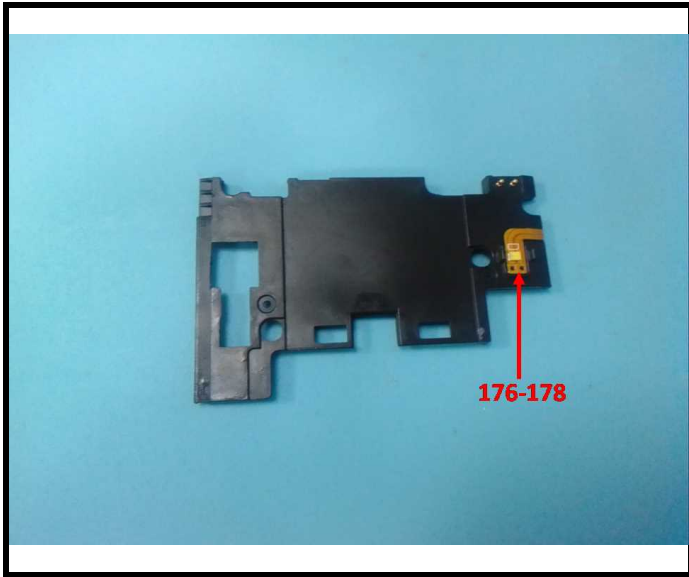


TEST REPORT

Report No.: 2401V87266E

Date: September 03, 2024

Page 40 of 51

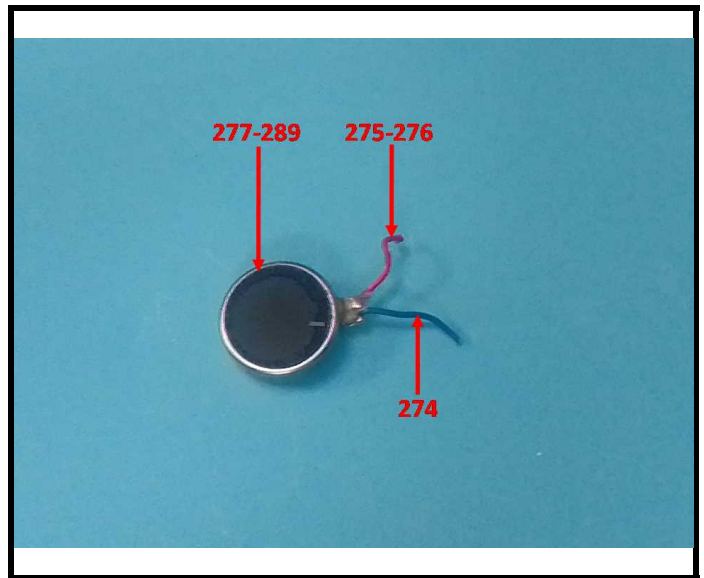
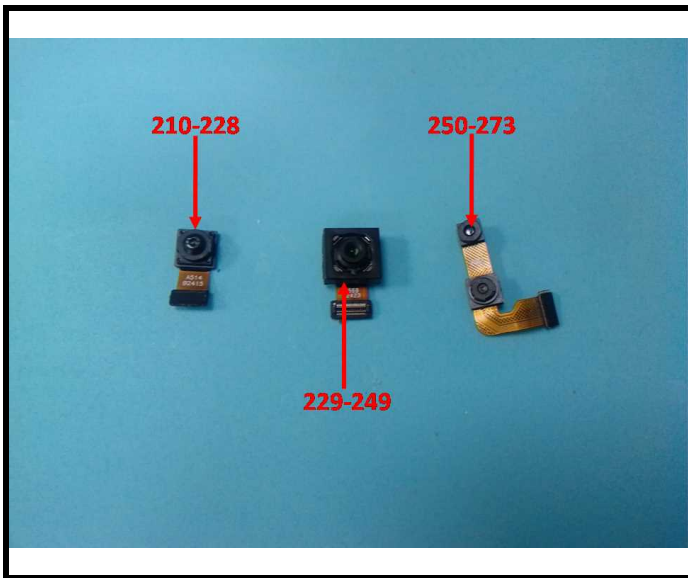
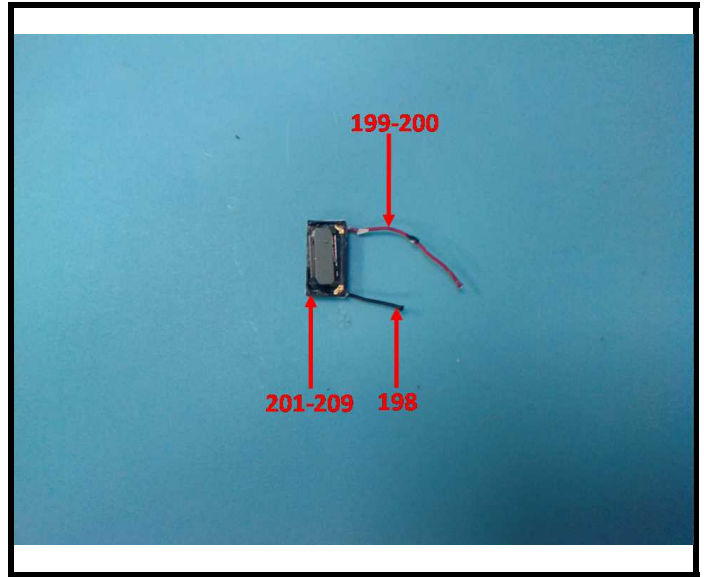
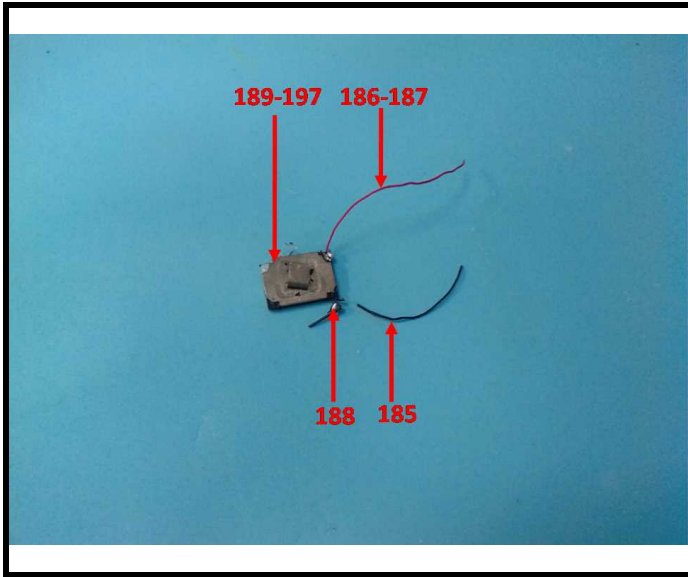


TEST REPORT

Report No.: 2401V87266E

Date: September 03, 2024

Page 41 of 51

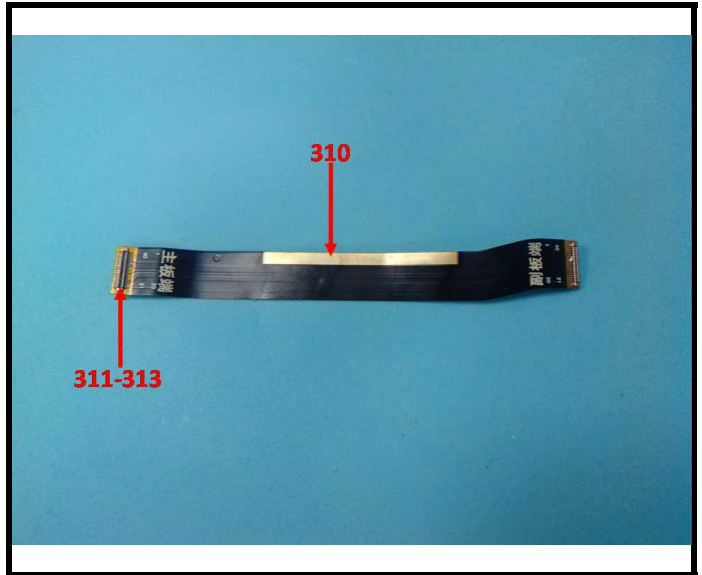
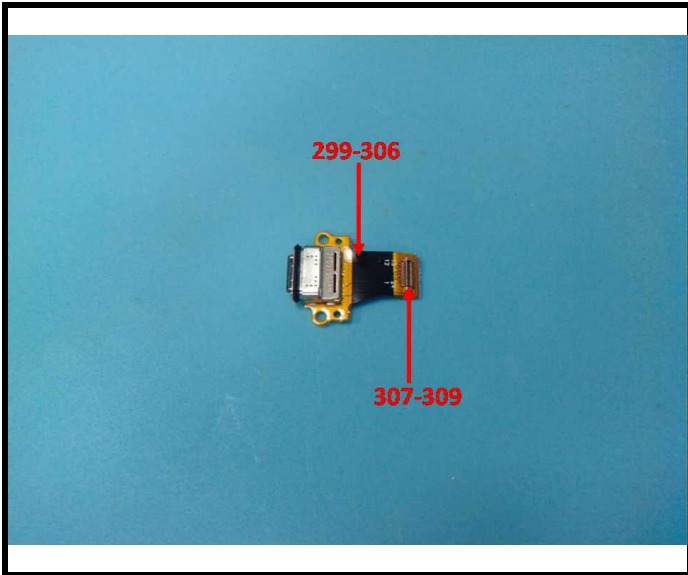
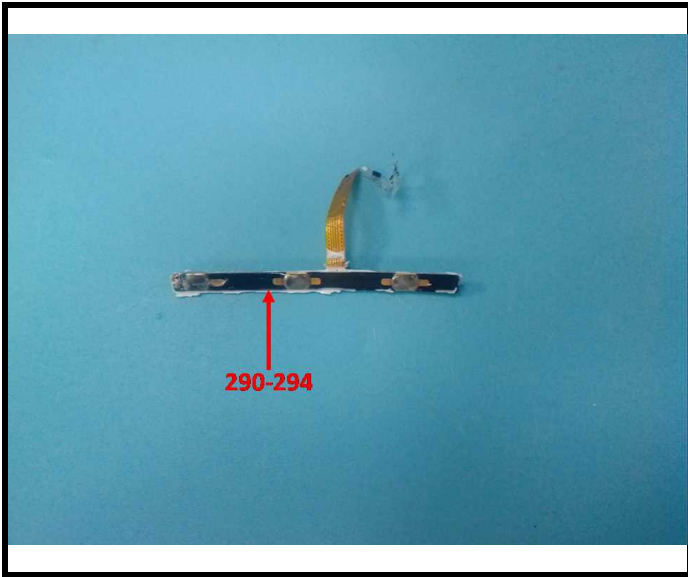


TEST REPORT

Report No.: 2401V87266E

Date: September 03, 2024

Page 42 of 51

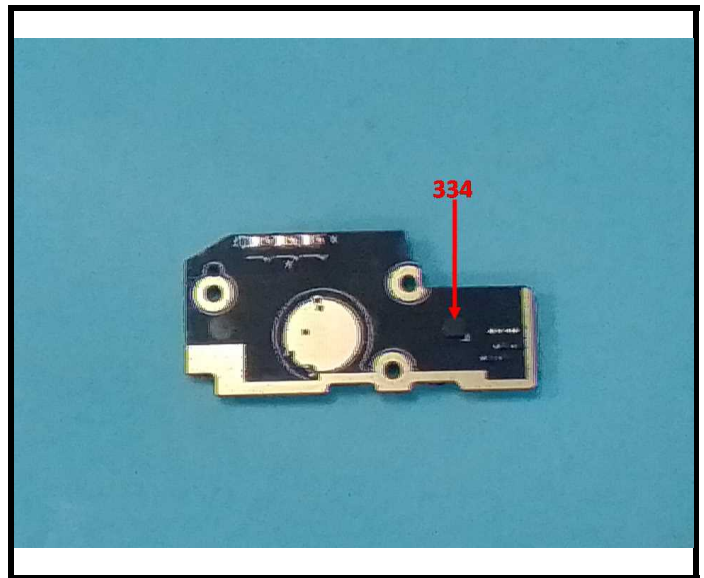
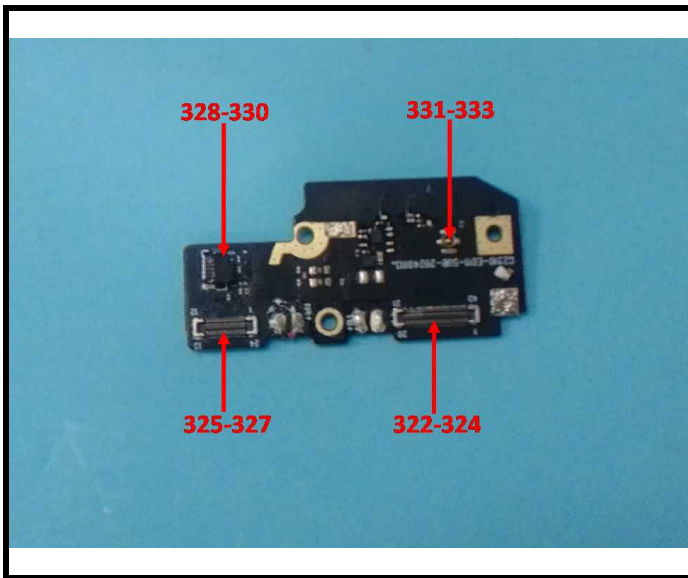
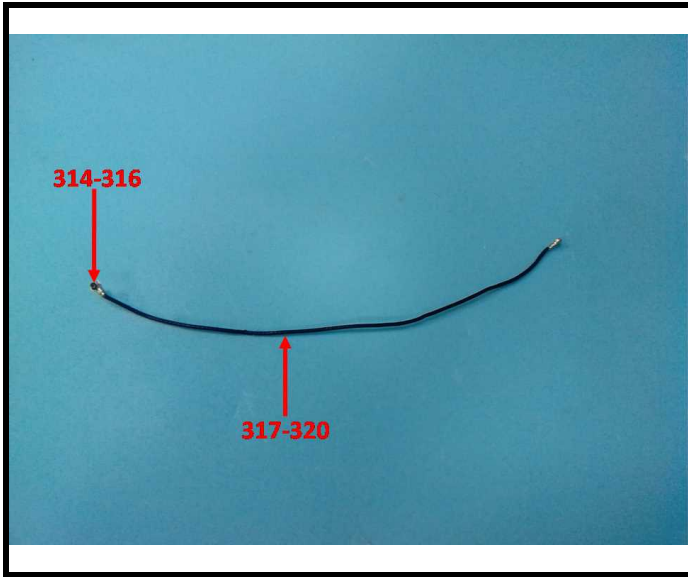


TEST REPORT

Report No.: 2401V87266E

Date: September 03, 2024

Page 43 of 51

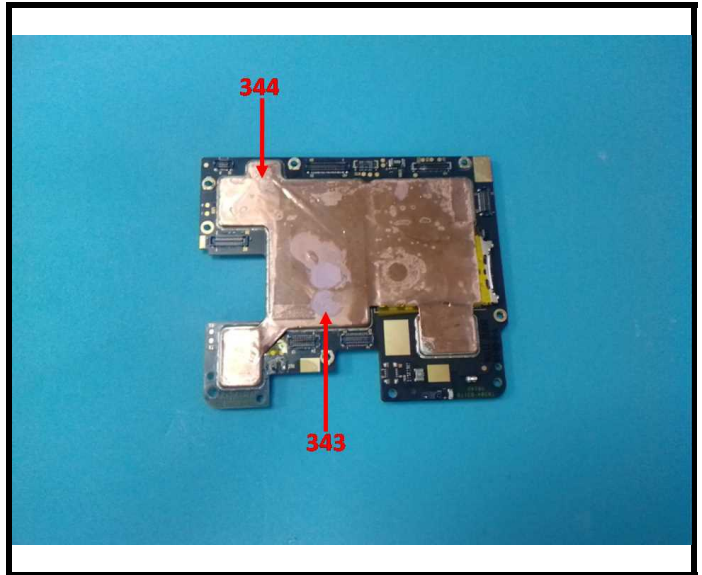
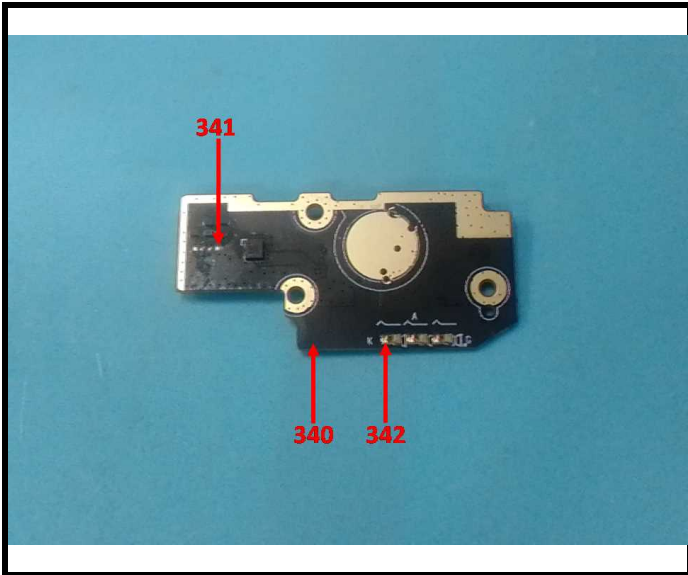
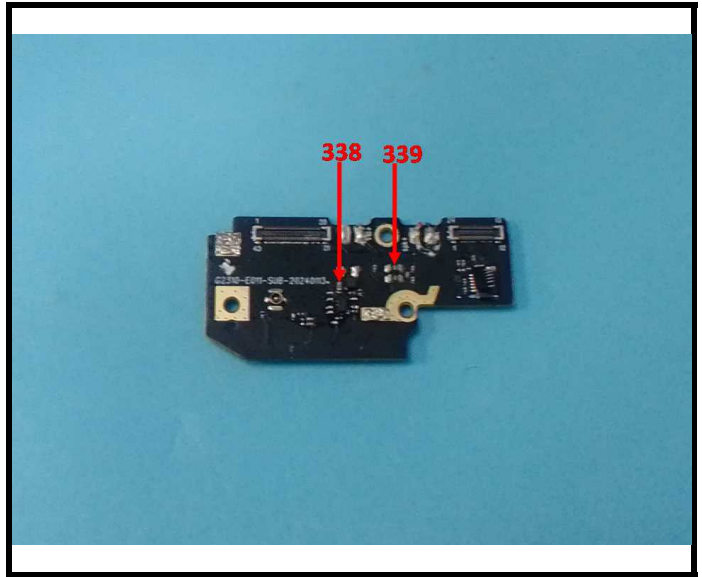
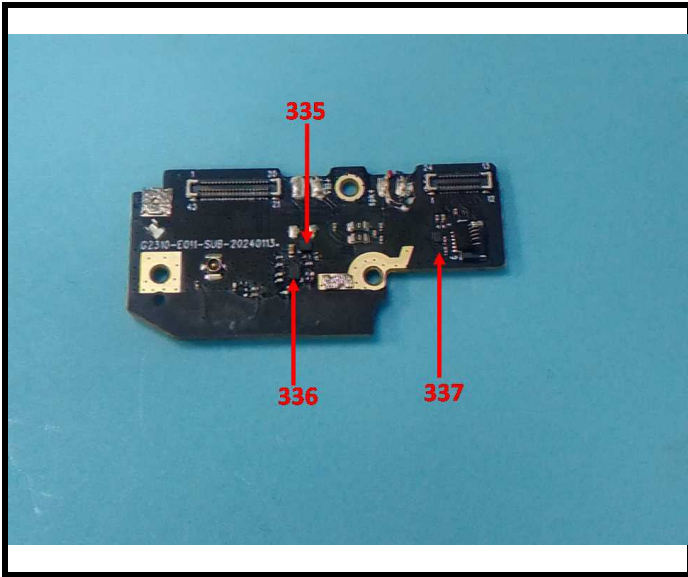


TEST REPORT

Report No.: 2401V87266E

Date: September 03, 2024

Page 44 of 51

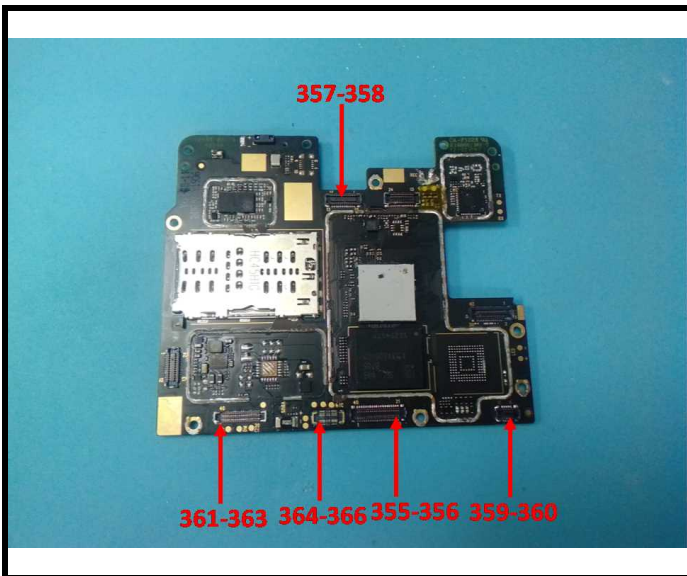
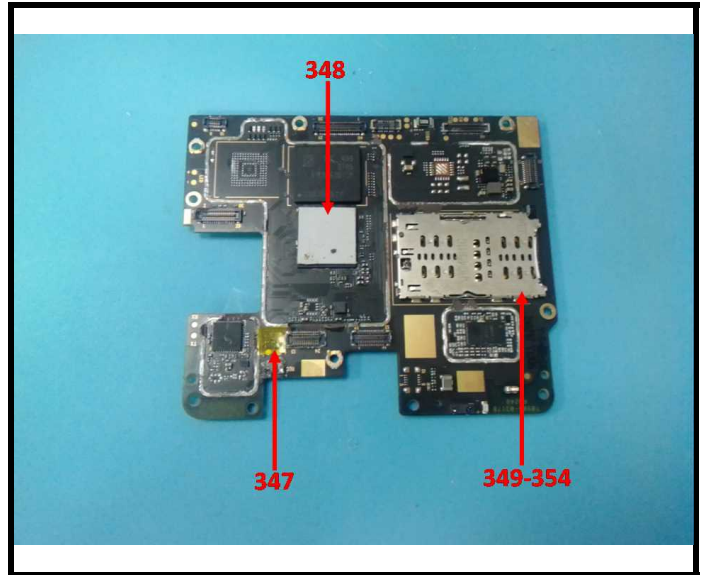
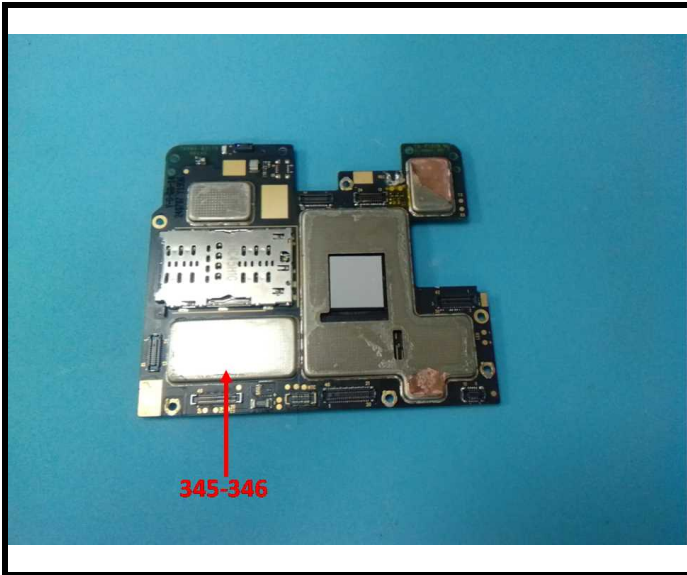


TEST REPORT

Report No.: 2401V87266E

Date: September 03, 2024

Page 45 of 51

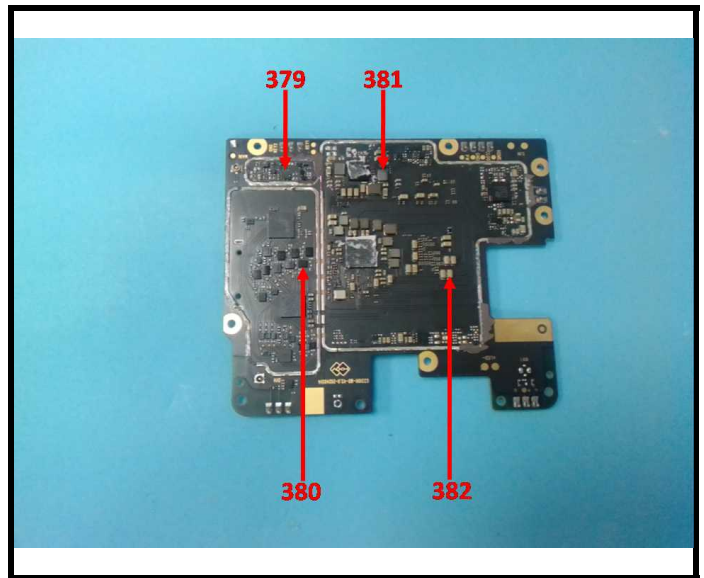
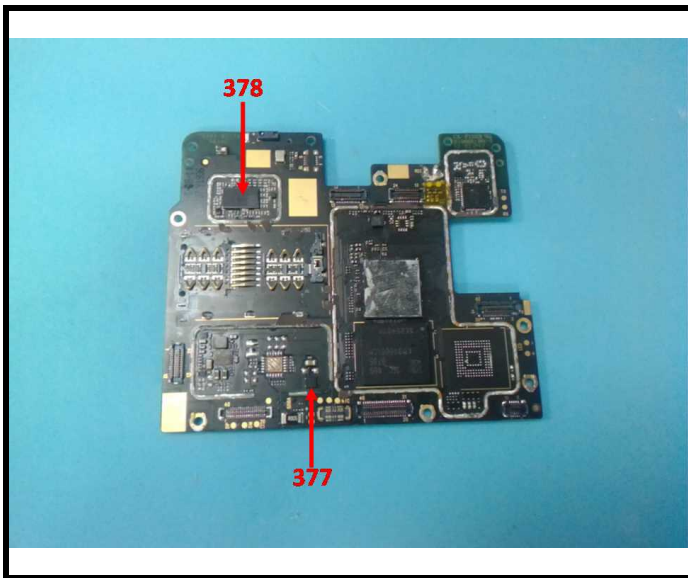
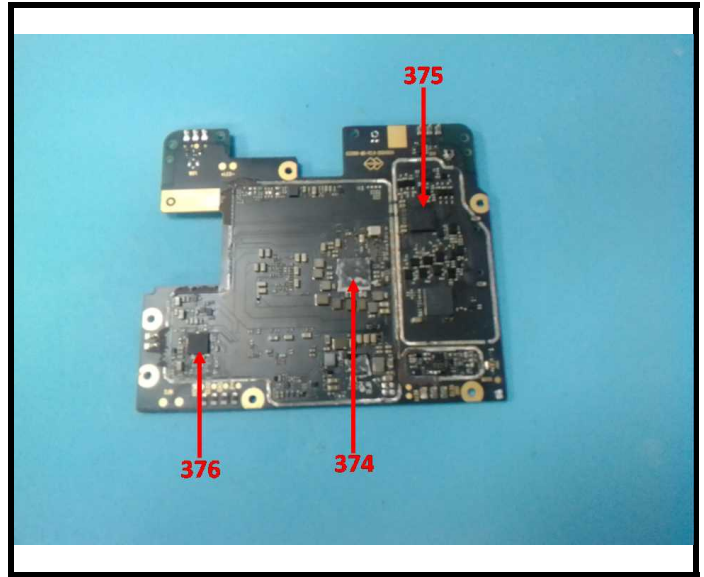
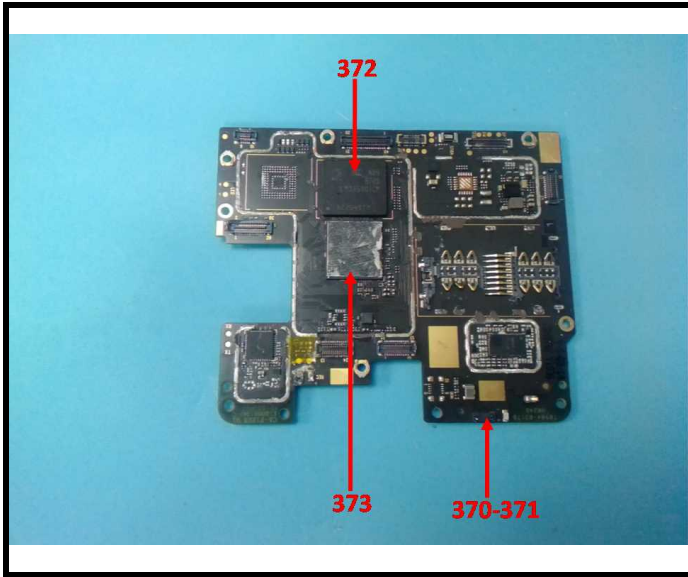


TEST REPORT

Report No.: 2401V87266E

Date: September 03, 2024

Page 46 of 51

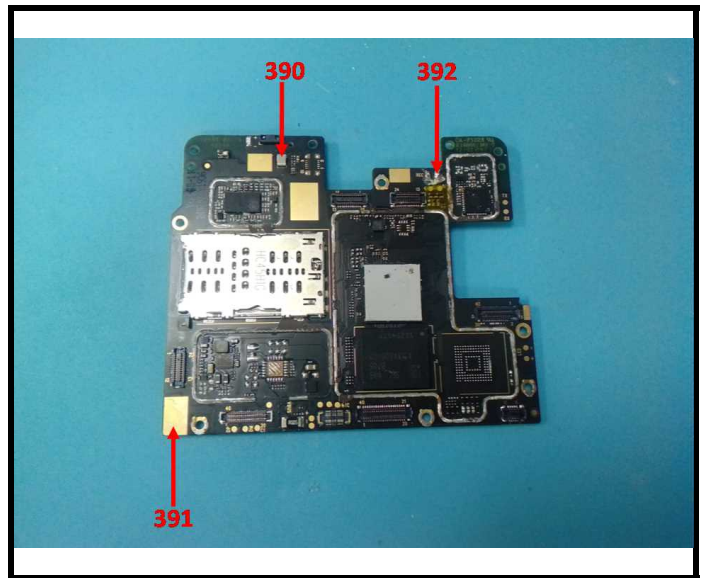
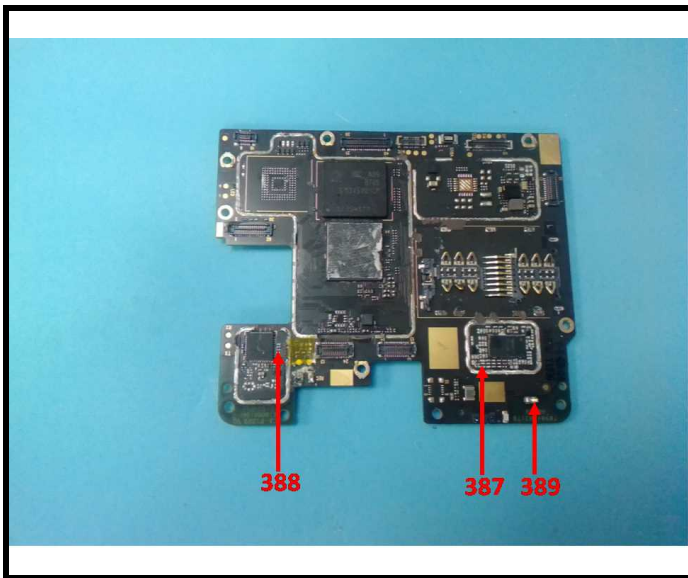
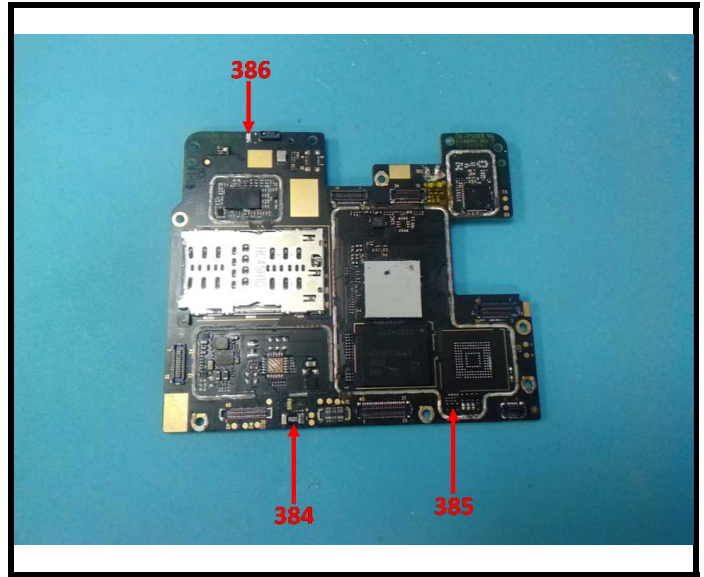
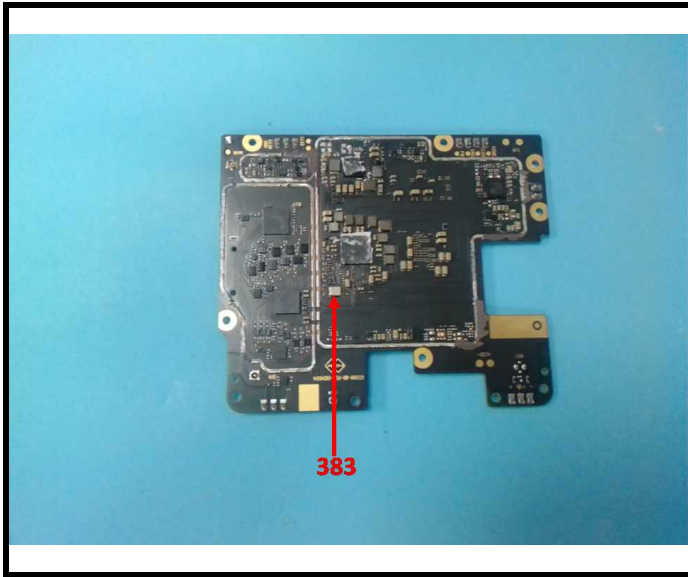


TEST REPORT

Report No.: 2401V87266E

Date: September 03, 2024

Page 47 of 51

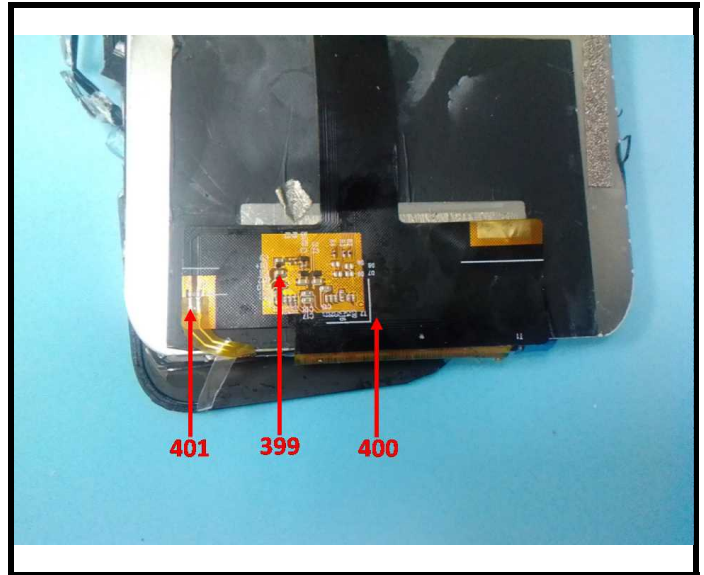
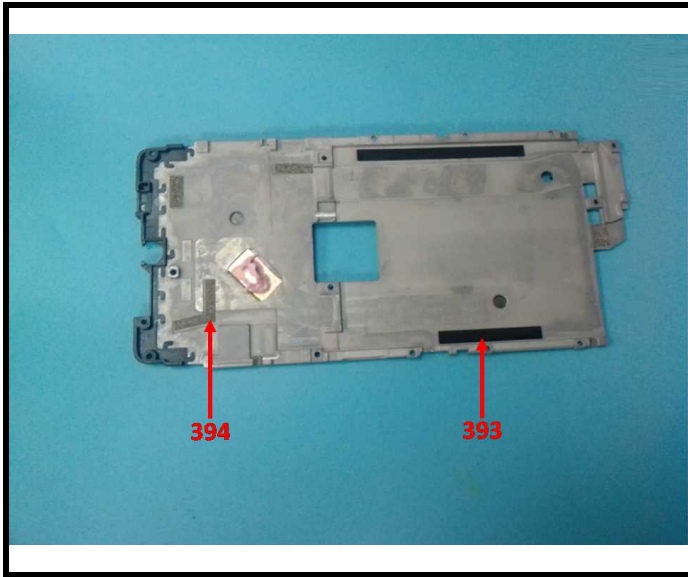


TEST REPORT

Report No.: 2401V87266E

Date: September 03, 2024

Page 48 of 51

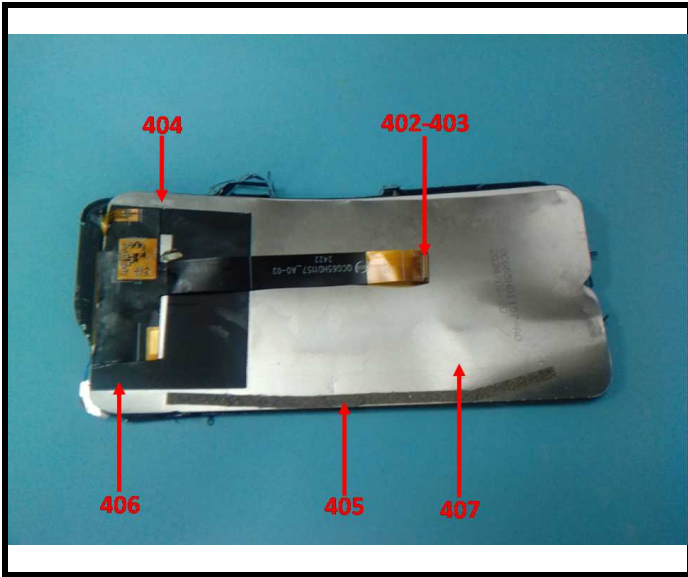


TEST REPORT

Report No.: 2401V87266E

Date: September 03, 2024

Page 49 of 51



TEST REPORT

Report No.: 2401V87266E

Date: September 03, 2024

Page 50 of 51



BACL authenticate the photo on original report only

TEST REPORT

Report No.: 2401V87266E

Date: September 03, 2024

Page 51 of 51

Statement:

- 1.This report cannot be reproduced except in full, without prior written approval of the Company.
- 2.Unless otherwise stated the results shown in this test report refer only to the sample(s) tested and such sample(s) are retained for 30 days only.
- 3.This report is valid only with a valid digital signature. The digital signature may be available only under the Adobe software above version 7.0.
- 4.Otherwise required by the applicant or Product Regulations, Decision Rule in this report did not consider the uncertainty.
- 5.The information which provided by the applicant, such as sample description, sample name, material component, style/item No. , P.O. No. , manufacturer, age phase, the laboratory is not responsible for its authenticity and this information can affect the validity of the result in the test report.
- 6.The test samples were in good condition before testing.

*** End of Report ***